

What Drives Beliefs about Climate Risks?

Evidence from Financial Analysts

Matilde Faralli *

November 20, 2024

[JOB MARKET PAPER - Click here for the latest version](#)

Abstract

This paper examines how exposure to extreme weather events affects earnings forecasts of equity analysts, using a unique dataset that matches natural disasters with the location of analysts across the US over 2000-2020. I find that analysts' earnings forecasts become more accurate after they experience an extreme weather event. This effect persists up to 1.5 years and is more pronounced for firms with high climate risks, greater asymmetric information, and for analysts who are more experienced. These results indicate that weather events prompt analysts to rationally acquire and incorporate more information into their forecasts. In aggregate, this information acquisition process does not spill over to analysts distant from the event and prices do not react to analysts revising their forecasts after the event. However, I observe that brokerage firms capitalize on this increased analyst accuracy by expanding coverage of stocks that are particularly sensitive to climate risks.

Keywords: Belief Formation, Climate Risks, Physical Risks, Analysts Forecasts

JEL Codes: G14, G24, Q54

*Imperial College Business School. E-mail: m.faralli20@imperial.ac.uk. I thank my supervisor Marcin Kacperczyk for invaluable feedback and guidance. I also thank Claudia Custodio, Patrick Bolton, Tarun Ramadorai, Ulrike Malmendier, Raghavendra Rau (discussant), Darwin Choi (discussant), Thomas Bourveau, Lu Liu (discussant), Ugo Panizza, Hans Degryse, Till Köveker (discussant), Francesco Stradi (discussant), Luigi Falasconi, and seminar participants at Imperial College Business School, the NSEF Workshop, the Centre for Climate Finance & Investment, Berkeley Haas, the European Sustainable Finance PhD Workshop 2023, Summer School in Finance and Product Markets-USI Lugano, EEA 2023, UN PRI, the Norges Bank Research Workshop, Sveriges Riksbank Third PhD Workshop, NOVA SBE, FIRS 2024, the Bank of England Seminar, and Nova Finance PhD Final Countdown for their comments. All errors are mine.

1 Introduction

Natural disasters in the U.S. have caused approximately \$2.8 trillion in damages over 1980-2023, and this number is expected to rise as global warming intensifies (NOAA, 2023).¹ Studies have shown that personal experience of extreme weather events leads to greater climate awareness, influencing various decisions, such as support for environmental policies (Hoffmann et al., 2022), investors' exposure to high-emission stocks (Choi et al., 2020), and households' shift to greener investments (Anderson and Robinson, 2019). However, the precise mechanisms driving changes in behavior remain largely unexplored.

This paper aims to uncover some of these mechanisms using the context of equity analysts and their response to weather events. Equity analysts are key information providers who regularly issue timely earnings forecasts. In my empirical strategy, I rely on a staggered difference-in-differences approach, comparing the earnings forecasts made by analysts exposed to the event with those made by analysts not exposed. Importantly, I study such forecasts for firms that were not affected by the event, to focus specifically on shifts in analysts' climate beliefs—expectations about the impact of climate change on firm performance—rather than efforts to estimate the event's direct costs.

I propose and empirically evaluate two mechanisms for why analysts might adjust their earnings forecasts following weather events. The *information hypothesis* posits that weather events prompt analysts to rationally seek out and incorporate more information about climate change, the outcome being an improved ability to assess climate risks, both physical, such as natural disasters, and transition, associated with carbon reduction policies. The *behavioral hypothesis* posits that extreme weather events may have an emotional impact on analysts, leading them to overestimate climate risks without any clear and long-term effect on their forecasting ability.²

I find that exposure to extreme weather events leads to more accurate earnings forecasts, consis-

¹This estimate is a lower bound, as it does not fully capture indirect economic losses. For instance, higher temperatures increase workplace injuries (Park et al., 2021), reduce firm sales and raise operating costs (Hugon and Law, 2019). When weather shocks disrupt supply chains, companies experience a decrease in operating performance (Pankratz and Schiller, 2024) and lose sales (Barrot and Sauvagnat, 2016 and Custodio et al., 2021). Firms in high-risk areas for weather events face more volatile earnings and cash flows (Huang et al., 2018). For this reason, both scholars and practitioners regard physical risks as the most significant source of long-term climate risk (Stroebe and Wurgler, 2021).

²Determining which mechanism predominates is critical for informing public policy (Deryugina, 2013). Policies like the SEC's climate disclosure rule (March 2024) in the U.S. and the EU Taxonomy, which require companies to disclose climate-related information, may be less effective if emotional reactions or cognitive biases primarily drive responses to this information disclosure.

tent with the information hypothesis. The effect is more pronounced for firms facing high physical climate risk and when there is greater asymmetric information. This finding supports the idea that exposure to weather events prompts a reassessment of climate-related beliefs, which is further reflected in analysts asking more climate-related questions during earnings calls and improving their ability to forecast companies directly affected by these events. Moreover, while brokerage firms seem to capitalize on analysts' increased accuracy by hiring more analysts, this effect appears limited to those with firsthand experience of the events, with no spillover to other analysts.

More specifically, to study the effect of exposure to weather events, I build a comprehensive dataset that matches the working location of equity analysts with the occurrence of natural hazards across 24 U.S. states over 2000-2020. The selected events are natural disasters that resulted in at least 100 injuries, 10 fatalities, or \$1 billion in economic damages. I argue that such events are salient shocks that influence individuals' beliefs. Specifically, affected states, where these events occur, show an increase in Google searches related to climate change (as in [Alekseev et al., 2021](#)) and greater concern about climate change among their population, as measured by the Yale Climate Opinion Data ([Howe et al., 2015](#)).

Next, I split the sample of analysts into two groups: analysts located within 100 miles from the weather event (treated analysts) and analysts located farther than 100 miles from the weather event (control analysts), both forecasting firms that are more than 100 miles distant from the weather event. The control group includes both analysts who have never been exposed to climate events (never treated) and analysts who in a given period have not yet been exposed to a weather shock but who will be exposed in the future (yet-to-be-treated).³ My sample includes 1231 analysts located in 24 states and covering 2770 firms. About 40% of the analysts in my sample have been exposed to an extreme weather event and are classified as first-time treated.

To account for the multiple events occurring across different locations, I use a staggered difference-in-differences estimation. My variables of interest are forecast bias and forecast error. Following [Hong and Kacperczyk \(2010\)](#), I define forecast bias as the difference between actual and forecasted earnings per share, scaled by the stock price from the previous quarter, and forecast error as the absolute value of this bias. While forecast bias reflects analysts' relative optimism or pessimism,

³My setting implies that never-treated analysts have never experienced a weather shock since they start working as analysts. A limitation of my approach is the lack of information on the analysts' locations before they enter the sample.

forecast error measures the overall accuracy of their forecasts.

The underlying assumption of my setting is that forecasted earnings, besides capturing perceptions of firms' future financial performance based on all available public information, also incorporate analysts' non-observable beliefs, including beliefs about climate risks. Given that I focus on weather shocks that do not directly impact firms' earnings—occurring more than 100 miles from the firm's location and without any accompanying changes in fundamentals— it is plausible that changes in analysts' forecasts in response to these shocks are driven by shifts in their beliefs rather than actual firm performance.

My baseline results show that exposure to weather shocks improves analysts' forecasts in terms of their forecast bias and accuracy. The point estimates indicate a statistically significant reduction in forecast error of 0.07 percentage points (4% of the average forecast error) and 0.06 percentage point reduction in the forecast bias (8% of the average forecast bias). However, the reduction in bias is not statistically significant at conventional confidence levels.

To discriminate between the behavioral and information hypotheses, I match detailed information about firms' climate risk profiles, sourced from Trucost, with analysts' exposure to specific climate events. Consistent with the information hypothesis, I find that analysts exposed to heatwaves have higher accuracy specifically for firms that are subject to heatwave risk.

Further, I show that analysts improve their forecast accuracy, especially for firms with high information asymmetry. Specifically, they become more accurate for firms with fewer analysts covering them, no earnings calls in the previous year, no disclosure of climate risks through the Carbon Disclosure Project, or firms in sectors less exposed to climatic risks. Consistent with the information hypothesis, analysts become more accurate when working in areas that are, on average, less prone to large weather events.

As a final step to discriminate between the behavioral and the information channels, I study the persistence of the exposure effect documented above. I posit that a behavioral response should be short-lived, whereas a shock that affects an analyst's ability to process information related to climate risk should have a more lasting effect. I find that exposure leads to more accurate forecasts for a period of up to 18 months, thus providing further support for the information channel.⁴

⁴Results on the persistence of the effect should be interpreted with caution, as they implicitly assume that no additional information about climate risks emerges in the aftermath of the event. This assumption is less likely to hold as I extend the horizon of my analysis.

To provide a more granular understanding of the information hypothesis, I show that my findings align with the theory of rational attention allocation of [Kacperczyk et al. \(2016\)](#). When weather events occur, the potential payoff from focusing analysts' attention on the impact of climate-related events on earnings forecasts increases, leading to the observed improvement in forecasting ability. Consistent with this theory, I find a significant increase in accuracy among skilled analysts—defined as those with more industry experience, top performers with smaller forecast errors in their sector, and lead analysts known for the timeliness of their forecasts—who are better at acquiring and processing information.

Beyond my core findings, other theories may also contribute to explaining the results. For example, analysts at larger brokerage firms show greater improvements in accuracy, suggesting that these events help mitigate conflicts of interest ([Michaely and Womack, 1999](#)). A heightened effort is also evident, as analysts particularly improve their forecasts for high market capitalization firms ([Glode, 2011](#)). However, the increase in accuracy seems specific to first-time exposure. Analysts become less accurate with subsequent shocks, suggesting they may overestimate their forecasting abilities after experiencing such events ([Anagol et al., 2021](#)).

Moreover, I rule out the possibility that weather events act solely as attention shocks, as both attentive and inattentive analysts exhibit improved accuracy ([Baker et al., 2020](#)). One concern is that treated analysts, being located near the event, may have less access to information about firms included in my sample (recall that I only consider firms distant to the event), as in [Malloy \(2005\)](#). However, I find no significant difference in outcomes between treated and control analysts at similar distances for a given firm.

To assess whether this response extends beyond earnings forecasts, I examine other aspects of analysts' work. Analysts become more accurate in forecasting stock prices but do not change their stock recommendations, possibly due to institutional constraints ([Malmendier and Shanthikumar, 2014](#)). Additionally, analysts with prior exposure to weather events are more likely to ask about physical risks during earnings calls, less likely to follow firms with high climate risk, and more accurate in their forecasts when firms are affected by such events. This suggests that their experiences sharpen their focus and enhance their ability to assess climate-related risks.

Importantly, I examine the responses of other financial players, including brokerage houses, distant analysts, and investors. I find that as the number of analysts exposed to weather events

increases, larger brokerage houses hire additional analysts and cover more companies with higher climate risks. However, distant analysts—who forecast companies covered by analysts exposed to the event—become more pessimistic without improving their forecast accuracy. Similarly, the stock prices of these companies do not react to the more accurate forecast revisions made by analysts exposed to weather events compared to those not exposed. This suggests that, while brokerage firms capitalize on improved forecast accuracy, this information does not spill over to other analysts or investors.

I conduct a battery of robustness checks and show that my results hold when I exclude analysts based in New York and California (where most analysts are located) and when excluding firms with plants near the events (my main analysis uses companies' headquarters locations). The results are also robust—in fact, they become stronger—if I only consider analysts located within a 50-mile radius of extreme weather events. I also conduct a placebo test by randomly generating shocks across the U.S. over the 20-year period of the study and find no significant effect on analysts' forecast bias or error. This suggests that the observed impact on analyst pessimism and accuracy is not driven by mean reversion.

Overall, my results contribute to the growing literature on how individuals form and update beliefs about climate risks (e.g., [Deryugina, 2013](#); [Krueger et al., 2020](#); [Bauer et al., 2024](#); [Ceccarelli and Ramelli, 2024](#)) by showing how experiencing weather events can raise climate awareness. They also enhance our understanding of the impact of climate events on financial markets (e.g., [Anderson and Robinson, 2019](#); [Choi et al., 2020](#); [Alekseev et al., 2021](#)) by providing insights from information providers. Finally, this study builds on the literature regarding analysts' responses to climate events (e.g., [Addoum et al., 2023](#); [Bourveau and Law, 2021](#); [Cuculiza, Kumar, Xin and Zhang, 2021](#)) by showing how analysts learn about climate risks from these experiences, however, this knowledge does not transfer to other analysts, allowing brokerage firms to capitalize on it.

The rest of the paper is organized as follows. Section 2 provides a review of the literature. Section 3 develops the conceptual framework and Section 4 presents the methodology. Section 5 presents the data and the descriptive statistics. Section 6 discusses the results, and Section 7 concludes.

2 Related Literature

This study contributes to three streams of literature: 1) the formation and updating of beliefs about climate change, 2) the impact of weather events on financial markets, and 3) analysts' behavior, particularly in relation to climate-related information and events.

The first stream of literature focuses on how individuals form and update their beliefs about climate change. [Deryugina \(2013\)](#) demonstrates that local temperature fluctuations influence individuals' beliefs about global warming, affected by both rational and behavioral updates. In the financial context, investors believe that only risks related to climate regulation have started to materialize ([Krueger et al., 2020](#)) and positive information about climate transitions increases investment preferences for 'green' assets ([Ceccarelli and Ramelli, 2024](#)). [Bauer et al. \(2024\)](#) explore how financial experts' mental models of climate risk mispricing shape return expectations, emphasizing the role of political ideologies and regional factors. This study extends this research by showing how subjective beliefs influence financial forecasts and market behavior, demonstrating that these beliefs can be elicited through means other than surveys, such as earnings forecasts.⁵

The second stream examines the impact of weather events on financial markets. [Choi et al. \(2020\)](#) find that retail investors are more likely to sell stocks of high-carbon-footprint firms after experiencing heatwaves. [Anderson and Robinson \(2019\)](#) show increased household investments in green funds following such events, while [Alekseev et al. \(2021\)](#) demonstrate that mutual fund managers alter their portfolio allocations across industries after extreme heat events.⁶ Although prior studies do not fully disentangle whether the effects are due to changes in preferences or beliefs, this study shows how weather events affect the earnings forecasts of analysts, who play a key role in financial markets.

The third stream focuses on analysts' behavior, particularly in relation to climate shocks. Evidence on how climate events affect analysts' forecasts is mixed. Some studies show worsened forecast accuracy for firms with earnings sensitivity to weather seasonality ([Zhang, n.d.](#)), firms located in countries with greater climate risk ([Kim et al., 2024](#)), and firms sensitive to high-temperature (Cu-

⁵Regarding ESG beliefs, [Giglio et al. \(2024\)](#) document significant heterogeneity in beliefs about ESG returns, noting that these beliefs differ substantially from traditional variables used in investment decisions.

⁶Similarly, [Huynh and Xia \(2023\)](#) demonstrates that investors overreact to firms exposed to natural hazards, leading to a decline in the bond and stock prices of affected companies. Additionally, [Alok et al. \(2020\)](#) finds that managers near such events overreact and significantly underweight stocks in disaster zones compared to distant managers.

culiza et al., 2023). Conversely, other studies find limited or no impact of extreme temperature events on earnings forecasts (Addoum et al., 2023, and Pankratz et al., 2023). A key difference between these studies and my work is that while they focus on firm-specific events, I focus on analysts' specific exposures.

A few prior papers examine how direct experiences of weather events affect analysts' forecasts. Addoum et al. (2023) report no significant effect on forecast revisions, while Bourveau and Law (2021) show increased forecast pessimism following hurricanes, but do not address forecast accuracy or firms' climate risks. Other studies suggest that personal exposure to weather events worsens analysts' forecasting abilities, demonstrating reduced accuracy following experiences with weather shocks (Han et al., 2024) and wildfire smoke (Israelsen and Kong, 2024). Consistent with this study's findings, Cuculiza, Kumar, Xin and Zhang (2021) observe improved accuracy in forecasting firms with high climate risks after experiencing abnormal temperatures.⁷ However, none of these studies test the specific hypotheses I address here, nor are they as comprehensive in demonstrating that analysts also rationally acquire information from experiencing climate-related events.

Overall, my findings align with prior research showing that increased access to information about climate risks enhances analyst accuracy. This has been observed when firms disclose climate risks in their annual reports (Wang et al., 2017), in firms with mandatory ESG disclosures (Krueger et al., 2021), following ESG-related incidents (Derrien et al., 2021), and among firms participating in the Carbon Disclosure Project (Chan, 2022).

3 Hypotheses Development

This study provides a methodology to extract climate beliefs by examining variations in earnings forecasts around weather events. Analysts' earnings forecasts can be defined as a function of their beliefs, including climate beliefs, and all available market data.⁸ If the market data remains constant and firms are not affected by the weather event, any changes in analysts' forecasts can only be attributed to shifts in their beliefs. Unlike studies examining how changes in investments may be

⁷In a recent paper, Reggiani (2022) shows that analysts revise down their forecasts for high climate risks companies after weather events.

⁸Formally, analysts' forecasts can be represented as (beliefs) * (market data), where analysts' *beliefs* include climate beliefs as well as beliefs about firms' fundamentals and the economy.

influenced by either preferences or beliefs—such as those involving mutual fund managers (Alekseev et al., 2021), households (Anderson and Robinson, 2019), and investors (Choi et al., 2020)—this analysis focuses solely on belief-driven changes.

I make two primary assumptions regarding how experiences of weather events influence changes in climate beliefs. First, first-hand experiences of salient natural hazards matter for changing beliefs, aligning with the literature that emphasizes the role of experiences in shaping expectations (as in Malmendier and Nagel, 2011, 2016; Malmendier and Wachter, 2021). Second, weather shocks do not directly or indirectly impact the firms. Thus, forecasted firms in the sample must be at a significant distance from the weather event and their fundamentals remain constant around the event period.⁹

Why would analysts change their forecasts if the firms are unaffected by the event? I propose two potential explanations: the information hypothesis and the behavioral hypothesis. These mechanisms are not mutually exclusive and could operate in tandem.

3.1 Information Hypothesis

Under the information hypothesis, analysts gain valuable insights from experiencing a weather event. I propose two conceptual frameworks to explain the information channel.¹⁰

First, according to the *rational attention allocation* theory proposed by Kacperczyk et al. (2016), analysts must decide each period how much attention—whether in terms of time or cognitive resources—to allocate to specific information or stocks. When weather events occur, the potential payoff from focusing on the impact of climate-related events on earnings forecasts increases, leading to a shift in attention allocation that results in improved forecast accuracy.

The model’s first prediction is selective attention: analysts are expected to enhance their skills by concentrating on higher-risk and more opaque firms, which increases accuracy and leads to more frequent forecasts for these companies. The second prediction posits that skilled analysts—identified as experienced analysts, top performers, and lead analysts—are more effective at acquiring and processing information. The model anticipates a more pronounced improvement in accuracy among

⁹Firms can be impacted indirectly by their suppliers or competitors. This is a second-order effect. In a perfectly competitive market, a climate shock to a supplier or competitor would be insignificant. In an imperfect market, controlling for industry-fixed effects or concentration indexes should mitigate the issue.

¹⁰The information hypothesis follows a Bayesian process, with analysts updating beliefs by incorporating new information from weather events.

these skilled analysts, who possess an information advantage over their less skilled peers.

Second, under the *attention model* of Baker et al. (2020), being near a weather event acts merely as an attention shock. Thus increasing uncertainty for all agents and causing inattentive forecasters to become more attentive and update outdated forecasts.¹¹ The primary prediction of this theory is that the effect on forecast accuracy will be more pronounced among analysts who were previously less attentive. In this case, the improvement in accuracy would largely stem from the general increase in attention rather than from any understanding of firm-specific climate risks.

The main predictions for the information hypothesis are as follows: 1) analysts' forecast accuracy improves following the weather event, 2) this effect is more pronounced in environments with higher information asymmetry, such as for more opaque firms or analysts with less prior information, and 3) the effect is persistent, leading to a long-lasting increase in accuracy.¹²

While the rational attention allocation theory predicts an increase in accuracy for more experienced analysts and firms with high climate risks, the attention shock hypothesis suggests an improvement primarily among previously inattentive analysts.

3.2 Behavioral Hypothesis

Under the behavioral hypothesis, changes in forecasts are driven by emotional reactions or cognitive biases, such as heuristics (Kahneman and Tversky, 1972) or mood effects (Dehaan et al., 2017).

Analysts' forecast changes may stem from the traumatic impact of the weather event, which could influence their risk-taking behavior (Bernile et al., 2017; Bourveau and Law, 2021). In this framework, analysts might become more pessimistic about all firms (*availability heuristic*) or specifically about firms with higher levels of climate risk (*representativeness heuristic*).¹³ Given that analysts are typically over-optimistic, any optimism reduction could lead to more accurate forecasts. However, this relationship is unclear, as similar studies have documented behavioral effects that result in increased forecast errors (Israelsen and Kong, 2024) or no effect at all (Addoum

¹¹In this context, the shock does not alter the data-generating process. On the contrary, in the *man-bites-dog* signal of Nimark (2014), analysts perceive greater uncertainty and treat the event as highly unusual, which could initially lead to less accurate forecasts due to increased uncertainty and greater dispersion.

¹²In the 'Other Mechanisms' section 6.4, I discuss alternative explanations that could potentially drive an increase in forecast accuracy.

¹³The representativeness heuristic suggests that an agent, after an event, tends to overestimate the probability of representative types (Kahneman and Tversky, 1972).

et al., 2023).

Experiencing adverse events may trigger negative moods, causing analysts to adopt a more pessimistic outlook. For example, analysts have been found to respond more slowly and pessimistically following adverse weather conditions (Dehaan et al., 2017), terrorist attacks (Cuculiza, Antoniou, Kumar and Maligkris, 2021), and sports events (Wu, 2023). However, the effects on analysts' accuracy are mixed: Cuculiza, Antoniou, Kumar and Maligkris (2021) report an increase, Dehaan et al. (2017) observe no change, and Wu et al. (2021) note a decline. Since mood is unobservable, ruling out this mechanism is challenging. However, if mood effects are present, increases in pessimism are likely to be consistent across all firms.

Overall, the main predictions for the behavioral hypothesis are: 1) analysts will exhibit shifts in optimism or pessimism, but these shifts may not necessarily impact forecast accuracy, and 2) any changes in optimism or pessimism are expected to dissipate after a few months. Importantly, while analysts may become optimistic since they cover companies not directly affected by the event, severe and costly weather events are more likely to elicit a negative response. While heuristic approaches suggest increased pessimism for firms with high climate risks, mood effects would predict a general increase in pessimism across all firms.

4 Empirical Strategy

In this section, I explain how I define salient weather shocks, the methodology used, the main assumptions for the validity of my methodology, and how to test the previously discussed hypotheses.

I start by defining natural disasters as shocks with at least one of the following three criteria: 1) more than 10 fatalities; 2) more than 100 injured people; or 3) more than 1 billion dollars in total economic damages.¹⁴¹⁵ By selecting only the largest disasters in terms of economic and health-related damages in any state, I hope to discard seasonal and common climate events that may not be attributed to climate change realization. A weak definition of salient event risks would include natural disasters that are not informative for equity analysts, hence biasing the estimators

¹⁴Taylor and Thompson (1982) characterize a salient event as “a phenomenon that when one’s attention is differentially directed to one portion of the environment rather than to others, the information contained in that portion will receive disproportionate weighing in subsequent judgments”.

¹⁵Criteria 1 and 2 are commonly employed as standard criteria to classify weather events as natural disasters (Wirtz et al., 2014), while the 3rd criteria is from Barrot and Sauvagnat (2016).

downwards.

To study the effect of salient climate shocks on analysts' forecasts, I divide my sample of analysts into treatment and control groups. The treatment group consists of analysts located within a 100-mile radius of a salient shock. The control group consists of analysts who issue forecasts for firms in the same sectors and forecast horizons as those followed by the treated analysts.

I ensure that a change in forecasts is driven by changes in beliefs by excluding all analysts forecasting firms located within 100 miles from the event. I use the location of the firm's headquarters as a proxy for the firm's location, following the approach of previous studies such as [Barrot and Sauvagnat \(2016\)](#), [Dessaint and Matray \(2017\)](#), and [Alok et al. \(2020\)](#).¹⁶ The analysis is conducted at the monthly level: keeping the last forecast in the pre-treatment months and the first forecast in the post-treated months. By exploiting the staggered arrival of the extreme natural events at the analysts' locations, I use the following regression:

$$Y_{i,f,h,t} = \beta_1 post_{i,f,h,t} + \beta_2 treat_{i,f,h} + \beta_3 treat * post_{i,f,h,t} + \theta X_{i,f,t-1} + \gamma_{h*s} + \varepsilon_{i,f,h,t} \quad (1)$$

for an analyst i , firm f , forecast horizon h and month-year t . β_3 is the coefficient of interest, indicating the effect of experiencing a weather event on treated analysts after the event compared to the control group and $\theta X_{i,f,t-1}$ controls for analysts' and firms' pre-trend differences. Fixed effects (FE) included are γ_{h*s} which is an interaction between the shock indicator and the forecast horizon. Since climate shocks occur within a 100-mile radius of the analyst's office location, standard errors are clustered by the analyst's office locations.¹⁷

Two dependent variables are then used to study whether analysts change their forecasts after a weather shock. Specifically, I follow [Hong and Kacperczyk \(2010\)](#) and use analysts' forecast bias and forecast error. Forecast bias is defined as $Bias_{ift} = (F_{ift} - A_{ft}) / P_{f,t-1}$, where F_{ift} is the earnings forecast of equity analyst i for firm f in month t , and A_{ft} is the realized earnings for firm f at time t divided by $P_{f,t-1}$, the stock price for firm f in the previous quarter. Since the bias could

¹⁶I demonstrate that the findings remain robust even when excluding firms with establishments near the event.

¹⁷Fast-growing literature highlights the problem arising by implementing a staggered difference-in-differences methodology (see [Baker et al., 2022](#)). When using multiple treatments over time, the estimated staggered DID coefficient can be seen as a weighted average across shocks. The problem arises when analysts experiencing a weather shock are compared to analysts who received treatment recently. Notice that this concern is addressed using a control group composed of analysts who have never been treated or are yet to be treated. Thus, analysts are removed from the control group after experiencing a weather shock. Furthermore, I control this problem by implementing a difference-in-differences analysis across shock and forecast horizons, which is captured by the γ_{h*s} .

be positive as well as negative, I use forecast error to explore whether the analyst becomes more accurate, i.e. lower forecast errors. Forecast error is defined as $Error_{ift} = |F_{ift} - A_{ft}|/P_{f,t-1}$, which differs from *Bias* only by having the numerator in absolute terms.

The set of additional covariates $X_{i,f,t-1}$, estimated during the pre-treatment period, included are common control variables used in previous studies (Hong and Kacperczyk, 2010; Addoum et al., 2023; Cuculiza, Antoniou, Kumar and Maligkris, 2021; Cuculiza, Kumar, Xin and Zhang, 2021; etc.) such as (i) days to end, the difference in days between the forecast and earnings announcement date; (ii) broker size, how many analysts are issuing forecasts for a brokerage firm in a year; (iii) companies followed, how many firms are forecasted by an analyst in a year; (iv) industries followed, how many industries are forecasted by an analyst in a year; (v) general experience, the difference in years between the first forecast issued and the analyzed forecasts; and (vi) firm experience, the difference in years between the first forecast analysts issued for firm j and the analyzed forecasts. Additionally, I control for firm size (measured by total assets) and analysts' bias and error during the pre-treatment period.

To ensure the internal validity of my econometric methodology, I check whether the parallel trend assumption holds. A common test is to run a regression with pre-treatment interaction dummies between periods and treated groups, such as:

$$\begin{aligned}
 Y_{i,f,h,t} = & \sum_{j \neq 0} \beta_j \text{relative month}_{i,f,h,t+j} + \beta \text{treat}_i \\
 & + \sum_{j \neq 0} \beta_j \text{treat} \times \text{relative month}_{i,f,h,t+j} + \theta X_{i,f,t-1} + \gamma_{s*h} + \varepsilon_{i,f,h,t}
 \end{aligned} \tag{2}$$

Where *relative month* is a binary variable that indicates the month when the forecasts were issued (from -3 months to + 3 months) relative to the reference month ($t = -1$), and *treat* takes value one for a treated analyst. The regression also includes pre-treatment controls ($\theta X_{i,f,t-1}$) and shock indicators interacted by forecasts' horizon (γ_{s*h}). The parallel assumption is satisfied if the difference between the control and treated group needs is either not significantly different or statistically different but constant throughout the pre-treatment months.

5 Data and Descriptive Statistics

5.1 Data

The dataset used in the paper is based on four main databases: (i) climate events are obtained from the Storm Events Database (NOAA); (ii) analyst forecasts are retrieved from IBES; (iii) analysts' office location is found on Refinitiv and Capital-IQ; (iv) companies' information are from CRSP and Compustat.

Weather events. The Storm Events Database is obtained from the official National Oceanic and Atmospheric Administration (NOAA) website. It contains data on 169,570 weather episodes from 1999 to 2020, covering 50 different event types reported by various sources, such as meteorological stations, media outlets, and call centers. When available, the dataset includes information on direct and indirect fatalities and injuries, geographical coordinates, event timing, as well as property and crop damages resulting from climate events. I define total fatalities and injuries as the sum of both direct and indirect cases, and total economic damages as the sum of property and crop damages, adjusted to real terms using 2013 as the base year.

I select salient weather events based on the following criteria: at least 10 fatalities, 100 injuries, or 1 billion US dollars in economic damages. This results in 185 unique episodes. For 72% of these events, precise geographical coordinates are provided. For events missing coordinates, I use the reported FIPS code of the county where the event occurred (with FIPS code translations obtained from the Storm Prediction Center WCM page, [NOAA, 2016](#)) and determine the centroid of the county as the event location.¹⁸ In doing so, I determine the geographical location for 98% of the salient events in the dataset.

Equity information. Companies' information about their fundamentals -such as companies' total assets, leverage, sales, and revenues- are sourced from the CRSP-Compustat quarterly database available through WRDS. Observations with no stock price are discarded, and I exclude all firms with an average share price lower than \$5 ([Hong and Kacperczyk, 2010](#)). My primary firm sectors

¹⁸The FIPS code is a unique identifier assigned to each county by the National Institute for Standards and Technology (NIST). These codes are obtained from Wikipedia's "Table of United States counties" (<https://en.wikipedia.org/wiki/User:MichaelJ/Countytable>).

are retrieved using the NAICS code, supplemented with SIC industry classifications when NAICS codes are missing. Additionally, I discard companies with missing sector information.

To proxy for firms' location, I follow previous literature that utilizes the headquarters address (for example, [Barrot and Sauvagnat, 2016](#) and [Alok et al., 2020](#)). Headquarters information, including city, state, and ZIP code, is obtained from Compustat Quarterly. Missing ZIP codes are linked to their respective latitude and longitude coordinates using a comprehensive public dataset from CivicSpace Labs ([Opendatasoft, 2021](#)). I keep only firms with headquarters located in the United States.¹⁹

As a proxy for firms' climate risks, I use firms' specific forecasted climate physical and transition risks from Trucost. For physical risks, Trucost reports the composite score of a company's physical risk exposure (ranging from 1-low risk to 100-high risk) as a weighted average across 8 different physical risks (wildfire, coldwave, heatwave, hurricane, sea level rise, flood, and water stress) for three forecast horizons (the year 2020, 2030 and 2050) and scenarios (high, medium and low). For my analysis, I use the composite physical risk forecasts of the year 2020 averaged across all future scenarios (high, medium, and low). In my sample, the average (as well as median) firm composite physical risk score is 60 points. Each physical risk averages from 3 points for flood and sea level rise to 57 points for water stress.²⁰

To assess transition risks, I rely on the Unpriced Carbon Cost adjusted EBITDA provided by Trucost. This metric captures the difference between a company's current carbon cost and projected future costs based on industry, operations, and various pricing scenarios. Firms with high transition risk are those in the top tercile of earnings at risk, using carbon earnings at risk for the year 2020 across multiple scenarios (high, medium, and low). The remaining companies are categorized as non-risky. In Appendix D, I also conduct a robustness check by analyzing firms' absolute emissions, defining firms in the top tercile of MSCI absolute scope 1 emissions data as high-risk entities.

Lastly, to assess the information available about climate risks for each company, I use their voluntary disclosures to the Carbon Disclosure Project (CDP) and discussions of climate risks during earnings calls from [Sautner et al. \(2023\)](#).

¹⁹One issue with Compustat is that when a headquarters changes, the data is filled in retroactively. I verify that the analysis is robust by excluding firms with misclassified headquarters information, using data from [Gao et al. \(2021\)](#).

²⁰As physical risks remain relatively consistent across time and geography, my choice of using the year 2020 should not significantly impact the results.

Analysts forecasts. I use the Details of Institutional Brokers' Estimate System (I/B/E/S) to collect short-term as well as long-term earnings forecasts (EPS) by analysts located in the U.S. from 1999 to 2020. The data are then merged with the IBES Recommendation file to obtain the analyst's last name, initial of the first name, and brokerage house abbreviation. To de-anonymize the broker ID, I use the IBES Translation file.²¹

To obtain information on analysts' locations, I manually download analysts for a sample of firms in Refinitiv, obtaining full names, email, brokerage names, and phone numbers. However, Refinitiv only provides information on active analysts that are currently producing forecasts and it does not provide any information on analysts' office locations. Luckily, the U.S. uses a numbering plan area (NPA) that allows me to find the location of the analyst by exploiting analysts' first 3-digits of their phone number.

To expand the sample, I use Capital IQ - Professional to search for professionals located in the U.S. and for which the profession title includes the term "Analyst" (for example, "Equity Analyst", "Research Analyst", "Former Analyst", etc.). Since the available version of Capital IQ - Professional provides only the U.S. state location of the analysts, to find the city of the analyst's office location, I assume that analysts working for the brokerage firms in a given state are located in the same city as analysts previously found in Refinitiv. To avoid mismatches, I manually check a subset of analysts, which moved at least once in my sample, using BrokerCheck.²²

Lastly, the dataset is further cleaned by: (i) including only forecasts made in U.S. dollars and for firms matched with the Compustat data; (ii) excluding all forecasts with an absolute forecast error (difference between the forecast and the actual earning) greater than \$10 (Hong and Kacperczyk, 2010); (iii) excluding all firms that are followed by less than five analysts (Hong and Kacperczyk, 2010); (iv) winsorizing the data at 0.5% for each tail and forecast horizon; (v) excluding forecast less than 30 days from the forecast announcement.

This results in a final dataset of 2,894 equity analysts across 29 U.S. states, covering 1,588,202 earnings forecasts for 5,109 firms from 2000 to 2020. However, the primary sample of analysts used in my main analysis is smaller: after merging analyst location data with shock events and applying

²¹Since the IBES Translation file was discontinued in 2018, my study focuses on brokerage houses for which I possess the translation, assuming that IBES brokerage matches remained consistent thereafter.

²²BrokerCheck is an open-source database provided by the Financial Industry Regulatory Authority (FINRA). See <https://brokercheck.finra.org/>.

my previously discussed empirical approach, I obtain a sample of 1,231 analysts across 24 states, covering 2,770 firms from 2000 to 2020.

5.2 Descriptive Statistics

In this section, I present the descriptive statistics of analysts and weather shocks in my sample. My analysis includes weather shocks located 100 miles from analysts who provide earnings forecasts for firms (unaffected by the weather event) and a control group of analysts forecasting firms within the same sector and forecast horizon. After applying these filters, the sample under study shrinks to 1,231 analysts located in 24 states and covering 2,770 firms from 2000 to 2020.

Analysts characteristics. Figure 1 maps the location of my sample of analysts throughout the U.S. (filtered by control and treated). Not surprisingly, 55% of equity analysts are located in the state of New York, followed by 12% in California. Prior literature has similarly observed a concentration of analysts in New York; for instance, Malloy (2005) found that 56% of all analysts are based in NYC. Notably, my results remain robust even when analysts based in New York are excluded from the sample (see Table 16).

Table 1 reports the summary statistics. The average bias for analysts is 0.75% while the average forecast error is 1.84% (respectively with a standard deviation of 3.5 and 3.3). An analyst in my sample follows on average 15 firms, with an average of 2 years of forecasting a single firm and approximately 4 years overall of work experience. Moreover, the average analyst follows two sectors and works in a brokerage firm alongside 67 other analysts. In the Appendix, Table A1 provides summary statistics for all analysts for which I have working location, not just those filtered for the analysis.

Weather shocks characteristics. Table 2 reports the characteristics of the salient events within a 100-mile radius of an analyst's location. For each type of weather event, the table indicates the average total number of damages (in million \$), the total number of deaths and injuries, and the number of events. In terms of economic impact, coastal floods cause the most significant damage. Debris flows, heatwaves, and tropical storms are associated with the highest number of fatalities, while winter storms lead to the most injuries. The most frequent events in the sample are tornadoes

and heatwaves.²³

Climate beliefs after a weather event. To validate that my selected weather events affect beliefs, I follow [Alekseev et al. \(2021\)](#) and download Google Trends about climate change in the state where analysts are situated. By regressing state-monthly Google Trends on the constructed indicator for extreme events with state and year fixed effects, I investigate if states with salient weather events present more Google searches about climate change than states with no events.²⁴ Columns 1-3 of Table 3 report the coefficients of interest for the different types of damages caused by the salient events. All indicators are positive, while only fatalities and economic damages are statistically significant. Similar to [Alekseev et al. \(2021\)](#), experiencing any fatalities or economic damages caused by extreme events increases relative interest in climate change by respectively 9.5% and 8.6%. Consistently, columns 4-9 use data from the Yale Climate Opinion Map ([Howe et al., 2015](#)) to show that in states where these events occur, a larger proportion of the population believes that global warming is happening and expresses increased concern in the following year.²⁵ This finding aligns with trends observed in Google search data, highlighting that selected extreme events affect climate change beliefs.

6 Empirical Findings

This section presents the results of my analysis. I begin with the main findings, followed by an exploration of the hypotheses behind the observed effects. I then examine potential mechanisms and provide additional analysis of how weather events impact analysts and financial markets. Lastly, I conclude with robustness tests to validate the results.

²³In the Appendix, Figure A2 displays the selected salient weather shocks that occurred near analysts' office locations, while Figure A3 shows all salient shocks recorded by NOAA across the U.S. from 2000 to 2020.

²⁴This analysis uses the entire sample of selected climate events, not just those near the analyst's location, to prevent the misclassification of month-states as non-treated, which could result in underestimated findings.

²⁵I use state-level Yale Climate Opinion Map instead of county-level to ensure more accurate and representative results, as larger populations provide more reliable estimates.

6.1 Main Results

My main analysis investigates how analysts located near a weather event adjust their forecasts compared to those further away. Table 4 presents the baseline difference-in-differences (DID) estimates for both forecast bias and error. The analysis uses analysts' yearly forecasts at various horizons (1 to 5 years ahead), considering only the last forecast made before the event and the first forecast after the event.

The estimated coefficients indicate that, after a weather shock, first-time treated analysts become more accurate (i.e. smaller forecast error) and less optimistic (i.e. smaller bias) compared to never-treated analysts. However, the reduction in forecast bias is not statistically different from zero at conventional confidence interval levels. The difference between the treated and control groups is 0.058 and 0.072 percentage points, for bias and error respectively. Comparing the estimated results to the average bias and error in the sample, the effects correspond to an 8% decrease in forecast bias and 4% in forecast error.²⁶

The Appendix shows sector-specific DID estimates in Figure A6 and event-specific effects in Figure A7. Analysts become more pessimistic in education, accommodation and food service, scientific, and mining sectors, and more accurate in scientific and wholesale. Specific climate events—such as wildfires, surges, and floods—increase pessimism, while accuracy improves (decreases) after storm surges, heatwaves, hail, and debris flow (extreme cold and heavy snow). These results highlight the heterogeneous responses of analysts across sectors and weather events.

I then test the validity of my DID by assessing whether the parallel trend assumption holds. Figure 2 plots the estimated coefficients of pre and post-period interaction terms between treatment and month indicators for both forecast error and forecast bias, using the month before the event ($t = -1$) as the reference month. The figures corroborate the findings that the forecast bias and error of control and treated groups are not statistically different in pre-treatment periods.²⁷

To ensure that changes in analysts' forecast bias and error are attributed to changes in their

²⁶In the Appendix, Table A2 presents the results using fixed effects for analyst*firm, year*firm, and year*state. When both year*firm and year*state fixed effects are introduced, the effect on forecast error becomes small and statistically insignificant. To confirm the robustness of these findings, Table A3 presents the results for 1-year-ahead forecasts, these results remain invariant to the introduction of fixed effects reassuring the robustness of the baseline results.

²⁷Figure 2 fills in missing data for analysts during the pre-treatment period if they did not issue forecasts in a given month. In the Appendix, Figure A5 focuses on analysts who issued at least one forecast in each pre-treatment month, confirming that the parallel trend remains robust.

climate beliefs, I verify that forecasted firm fundamentals remain stable between one quarter before and the quarter of the event. Figure 3 illustrates that, aside from a small statistically significant increase in CapEx, there is no significant statistical variation in firm fundamentals surrounding the event. In the Appendix, Figure A4 shows that this also applies when compared to one quarter after the event.

Given that climate risks affect both short- and long-term expectations, I analyze whether analysts perceive these risks as threats to firms' earnings in both timeframes. It is important to note that the baseline results aggregate analysts' forecasts across all horizons (1 to 5 years ahead). Table 5 reports the estimated coefficients for each forecast horizon separately, with 5-year-ahead forecasts excluded due to data limitations. The table shows that the reduction in forecast error following a weather shock is primarily driven by 1-year-ahead forecasts.

For longer horizons, the results are mixed. For the 4-year horizon, analysts exhibit increased optimism, which leads to decreased accuracy. In contrast, long-term growth (LTG) estimates decrease after the event. This is surprising since LTG typically reflects expectations for three- to five-year growth, which should be consistent with the 4-year horizon.

These findings, indicating that analysts primarily revise short-term forecasts, align with analysts' tendency to focus on shorter horizons that are more susceptible to updates based on new information (Décaire and Graham, 2024). However, they raise important questions about how analysts' beliefs regarding climate risks affect their long-term outlook. Specifically, do analysts believe that firms may adapt to climate risks (resulting in no change in their expectation), benefit from climate risks (leading to a positive outlook), or be negatively impacted? This opens up avenues for further research.

6.2 Behavioral versus Information-based Explanation

The study aims to determine whether changes in forecasts are driven by analysts' emotional responses or their acquisition of information. To address this, I examine firms' climate risks, the amount of information available about these companies, and the persistence of the effect on analysts' forecasts

Firms' climate risks. I leverage company-level data on specific climate-related physical risks to examine whether analysts who experience a particular climate event revise their forecasts for companies exposed to similar risks.

I focus on heatwaves for two main reasons. First, from a data perspective, heatwaves occur more frequently, resulting in a larger number of analysts located near these events, as well as more firms exposed to heatwave risk. Second, extensive literature highlights the costly impact of heatwaves on companies, affecting their operating performance (Pankratz and Schiller, 2024) and leading to lost sales (Barrot and Sauvagnat, 2016; Hugon and Law, 2019, Custodio et al., 2021), as well as influencing climate-related beliefs of market participants (Anderson and Robinson, 2019; Choi et al., 2020; Alekseev et al., 2021).

Table 6 presents findings for firms categorized into high (above-median) and low heatwave risk, comparing analysts who experienced a heatwave to those who did not. I focus on the 1-year-ahead horizon due to the smaller sample size for longer forecasts; however, results for all forecast horizons are provided in Appendix Table A4. The first two columns replicate the baseline results, reflecting consistent patterns despite the smaller sample size. Notably, the magnitude of the effect is larger; given a forecast error of 1.09 for 1-year-ahead forecasts, this corresponds to an 11% increase in forecast accuracy. Columns 3 and 4 demonstrate that analysts improve their forecast accuracy specifically for firms with high physical risks following a heatwave, becoming 24% more accurate. No significant effects are observed for firms with different risk profiles (columns 5 and 6), suggesting that the factors enhancing analysts' accuracy are specific to heatwave risk.

In the Appendix, I also examine firms' transition risks due to the interconnected nature with physical climate risks. For example, lenient carbon regulations could lead to more extreme weather events in the future. To understand how analysts revise their forecasts for companies with varying climate risks, I categorize firms based on their composite physical risks as high (above-median) or low, and their transition risks as high (top tercile) or low, using Trucost's carbon earnings at risk weighted by EBITDA.

Table A5 shows that analysts become more pessimistic and accurate for firms with high physical and transition risks, but overly optimistic and less accurate for firms with high physical risks and low transition risks. The differences in analysts' responses highlight the complexity of predicting corporate performance in the face of climate risks, suggesting that analysts may believe stricter

regulations will be implemented in the future. This expectation translates into analysts being more optimistic about companies with low transition risks.²⁸

Asymmetric information. If analysts gain new information from a weather event, this should be reflected in greater forecasting ability, particularly in situations of high information asymmetry where acquiring information is costly.

To test this hypothesis, I use several proxies for asymmetric information: i) companies' climate risk disclosure through the Carbon Disclosure Project (CDP), ii) companies operating in climate sensitive sectors, iii) companies covered by many analysts, iv) analysts located in high climate risk states, and v) companies discussing climate risks during earnings calls.

I start by collecting data on companies that voluntarily disclose climate-related information to the CDP, identifying 276 companies in my sample with such disclosures. Additionally, I categorize firms into high and low climate sensitive sectors based on the IPCC classifications used in [Choi et al. \(2020\)](#). The rationale is that companies disclosing their climate risks, or operating in more climate sensitive sectors, are likely to have more information about climate risks, both at the company and sector level.

Next, I identify states with higher climate risks, defined as those experiencing more than the median number of shocks (i.e., four events) in my sample of analysis. The assumption is that analysts in states with fewer climate events have less exposure to climate risk information. Finally, I calculate the number of analysts following each company, as greater analyst coverage is associated with increased competition and reduced forecast bias ([Hong and Kacperczyk, 2010](#)). Companies in the top quartile of analyst coverage are classified as having high coverage, while all others are categorized as having low coverage.

Panel A of [Table 7](#) presents the results for firms broken down by CDP disclosure and climate risk of the sector. The estimated coefficients indicate that analysts become more accurate for firms without CDP disclosure. Interestingly, analysts become more pessimistic but not more accurate for firms with CDP disclosure. When looking at the sector's climate risk, analysts become twice as accurate for companies in low climate risk sectors.²⁹

²⁸[Table A6](#) corroborates that analysts, by focusing solely on transition risks, are more pessimistic and accurate for high-transition risk firms but more optimistic and less accurate for low-risk firms.

²⁹Another proxy for uncertainty is analysts' forecast dispersion. [Table A7](#) reports the results broken down by firms'

Panel B shows that firms covered by fewer analysts experience a stronger effect on the accuracy of analysts' forecasts. Additionally, analysts in low-risk states become five times more accurate. These results suggest that analysts benefit from exposure to weather events by acquiring information in areas that are typically more opaque and have a lower flow of information.

I then examine companies that discussed climate change exposure during their earnings calls in the previous year (using data from the four quarters prior), as well as those that did not have such discussions or lack data. The data is sourced from [Sautner et al. \(2023\)](#), which provide scores based on whether climate change exposure was discussed (*exposure*), whether the discussion related to uncertainty and risk (*risk*), whether it was *positive* or *negative*, and whether it pertained to *physical* and *transition risks*. For each score, I then construct an indicator variable that takes the value of one if there was any discussion about climate change exposure in any of the previous year's earnings calls.

Figure 4 shows no significant effect on either relative pessimism or accuracy when climate change is discussed or not discussed during an earnings call. This suggests that analysts may have already incorporated climate risks into their forecasts, so the weather events provide no additional information. Interestingly, for companies without available earnings call information—whether due to data unavailability or because the company did not conduct the call—I find that analysts become more accurate in their forecasts, without a corresponding change in forecast bias. While these results should be interpreted cautiously due to potential measurement errors, they support the hypothesis of asymmetric information, indicating that analysts improve their accuracy for companies lacking prior information.

Persistence. Lastly, if weather events convey no information on climate risks, equity analysts' forecasts should eventually revert to their fundamental values. However, empirically testing this hypothesis is challenging as it requires assuming no additional information about climate risks is released after the event. Despite these limitations, I explore whether analysts adjust their forecasts back to previous levels following the weather event.

I analyze changes in forecast bias and error at 4, 6, 12, and 18 months after the event, relative to the last forecast issued before the event for treated analysts. I focus on 1-year-ahead forecast

quartiles of dispersion, such as high (top quartile) and low dispersion (all others). Consistent with the main results, analysts become more pessimistic and accurate for firms with higher dispersion.

horizons, as this horizon primarily drives the main results.³⁰ Figure 5 shows that analysts maintain an accurate stance up to 18 months post-event for 1-year-ahead forecasts, though the results are not statistically significant at 6 and 12 months.

The results indicate that analysts acquire valuable insights from experiencing the event, as demonstrated by improved accuracy for high-risk firms and regions with greater information asymmetry. This effect also appears to persist over time. Collectively, these shifts in analysts' beliefs support the *information hypothesis*.

6.3 Mechanisms

To provide a more nuanced understanding of the information hypothesis, I propose and empirically evaluate two theories to explain why analysts become more accurate after weather events. First, these events might act as attention shocks, prompting inattentive analysts to revise their forecasts (Baker et al., 2020). Second, weather events could lead analysts to focus on more valuable information (Kacperczyk et al., 2016; Loh and Stulz, 2018). According to the first theory, inattentive analysts should present the largest forecasting improvements, while the second theory suggests skilled analysts, who can better adapt and refocus, benefit most.

To test these hypotheses, I begin by defining inattentive analysts. I calculate an attention score based on the number of forecasts an analyst issues in a year relative to the number of companies they cover. In my sample, analysts have a median score of 10, meaning that, on average, they issue at least 10 forecasts per company each year. Using the score calculated in the year prior to the event, I classify analysts with a score of 10 or higher as *attentive*, and those with a score below 10 as *inattentive*. In my difference-in-differences (DID) sample, there are 318 attentive and 865 inattentive analysts. This suggests that my sample may suffer from a selection bias, as it contains a larger number of inattentive analysts.

Defining skilled analysts is challenging, as I lack access to *All-Star Analysts* data.³¹ Instead, I define skilled analysts as those in the top decile in terms of years of experience as analysts, arguing

³⁰Appendix A9 provides results for all forecast horizons, but these results are not statistically different from zero. This is not surprising since Table 5 indicates that there is no effect for longer horizons and analysts are more inaccurate for 4-years ahead forecasts.

³¹*All-Star analysts* are those recognized as top performers in an annual contest of financial analysts conducted by *The Wall Street Journal* in the United States.

that they are better equipped to extract information about future climate-related costs from weather events. I also show that the results are robust to alternative definitions of skill, such as forecast timeliness (following [Cooper et al., 2001](#)), presented in Table A9, and performance, calculated based on forecast errors (following [Hong et al., 2000](#)), shown in Table A10.³²

Table 8 presents results for analysts categorized by attention and experience, reporting findings for both 1-year-ahead (Panel A) and all horizons (Panel B). For 1-year-ahead forecasts, both attentive and inattentive analysts become more accurate, but high-experience analysts show more than double the increase in accuracy compared to low-experience ones. Across all horizons (Panel B), attentive analysts do not exhibit increased accuracy, as their optimism for long-term forecasts leads to a decrease in forecast errors that masks the increase in errors for short-term horizons. However, high-experience analysts continue to show an increase in their accuracy.³³

Overall, these findings support the rational attention allocation theory ([Kacperczyk et al., 2016](#)). When weather events occur, analysts are incentivized to focus on climate-related impacts on earnings forecasts, leading to improved accuracy, particularly among experienced analysts who leverage their information advantage.

6.4 Other Mechanisms

This section discusses other potential mechanisms, such as geographical distance ([Malloy, 2005](#)), distraction ([Liu et al., 2022](#); [Han et al., 2024](#)), effort ([Glode, 2011](#); [Loh and Stulz, 2018](#)), learning about one’s abilities ([Anagol et al., 2021](#)), and reduced conflicts of interest ([Michaely and Womack, 1999](#)).³⁴

Geographical distance. In a seminal paper by [Malloy \(2005\)](#), the author shows that analysts with closer geographical proximity to the companies have greater information flow. By design, my

³²These tables report results for analysts’ timeliness and performance, calculated both at the firm and sector levels. Only sector-level findings are consistent with the main results, highlighting the importance of sector-specific experience.

³³If I define the attention score based on the average (rather than the median) in my sample—corresponding to a score of 12—I find that improvements in accuracy are confined to inattentive analysts. No such improvements are observed for attentive analysts, even when considering the 1-year-ahead forecast horizon.

³⁴Since I do not observe a specific increase in pessimism, it is unlikely that the effect is driven by mood effects ([Dehaan et al., 2017](#)). However, the observed rise in pessimism for firms with CDP disclosures or high transition risks may indicate a heuristic effect ([Kahneman and Tversky, 1972](#)).

study defines treated analysts as those who are near the weather event, yet the event itself is far from the companies, thus making these analysts inherently distant from the companies. This could imply that the treated analysts had a higher level of information asymmetry to begin with. However, it is challenging to differentiate whether the control group did not update their forecasts because they already had this information about the firms (due to their proximity to firms) or because they did not experience the event (i.e., they did not acquire new information).

If previous results are driven by geographical distance the effect is expected to be significantly larger for analysts who are further from the companies, given the larger information asymmetry. To address this concern, I divide my sample into analysts near the companies (i.e., equal to or below 751 miles, which is the median distance from analysts to firms in my sample) and analysts distant from the companies (i.e., above the median). Table [A11](#) indicates that the observed results are from analysts closer to firms, which is not consistent with the geographical distance hypothesis.

Distraction. Large weather events could potentially distract analysts, leading to increased forecast errors following the event ([Liu et al., 2022](#); [Han et al., 2024](#)). However, the observed increase in accuracy does not support this hypothesis.

Effort. An alternative explanation is that analysts may concentrate their attention on companies critical to their professional careers ([Glode, 2011](#); [Loh and Stulz, 2018](#)), such as firms with high institutional ownership and large market capitalizations within their portfolios. Table [9](#) shows no statistically significant results for both high and low institutional ownership firms; however, analysts do demonstrate increased accuracy for high market capitalization companies. This suggests that there may be an increase in effort following the event for companies that are particularly important to analysts.³⁵

Less conflict of interest. The greater uncertainty caused by weather events may lessen the impact of conflicts of interest, which often pressure analysts to issue overly positive forecasts for firms with close ties to their brokerage firms. This reduction in optimism leads to more accurate forecasts, particularly for analysts at larger brokerage firms ([Michaely and Womack, 1999](#)). The results in Table [9](#) show that the observed increase in accuracy is among analysts at large brokerage

³⁵Additional tests could involve examining the number of forecasts or reports they produce.

firms, suggesting a decrease in conflict of interest. However, it is also possible that larger brokerage firms, with their greater resources and infrastructure, are better equipped to manage the disruptions caused by extreme weather, allowing analysts to focus more effectively on their forecasts.

Learning about one’s abilities. Analysts might interpret experienced weather events as signals regarding their forecasting abilities rather than just learning about climate risks (Anagol et al., 2021). According to this theory, analysts would become more responsive to future signals. While my primary analysis focuses on analysts experiencing weather events for the first time, I examine analysts who encounter between 2 and 8 shocks throughout their careers. As a control group, I use two types of analysts: those who have never experienced a shock and those who have experienced one less shock than the treated analysts.

Figure 6 illustrates the effects on analysts’ bias (a) and error (b). The results for bias are mixed: no significant change is observed for the second shock, but pessimism increases after the third and fourth shocks, with inconsistent results beyond that. Regarding forecast error, analysts generally become less accurate with subsequent shocks. These findings suggest a potential behavioral effect aligned with the theory of learning about their forecasting abilities. However, the results also indicate that initial experiences with weather events lead to increased accuracy, while subsequent shocks do not produce a similar effect. This pattern may explain the mixed results reported in the literature.

6.5 Additional Analysis

In this section, I investigate how analysts adjust their stock price targets and recommendations, exercise discretion in selecting which firms to cover, and determine the questions they pose during earnings calls. Additionally, I examine whether analysts with prior experience of weather events demonstrate greater accuracy in forecasting the performance of firms impacted by such events.

Forecasting stock prices is more complex than forecasting earnings due to the need to predict long-term payout ratios and appropriate discount rates (Stotz and von Nitzsch, 2005). Recommendations, meanwhile, tend to be overly optimistic and less volatile than earnings forecasts (Michaely and Womack, 2005), partly due to pressure from investment banks for more favorable recommendations (Malmendier and Shanthikumar, 2014). Despite these challenges, Table A12 shows that

analysts, after experiencing a weather event, exhibit a statistically significant 7% reduction in target price forecast errors. In contrast, Table A13 reveals no significant change in analysts' recommendations following weather events, possibly due to institutional constraints.³⁶

Next, I examine whether analysts with prior weather event experience demonstrate enhanced forecasting abilities when assessing the impact of such events on firms. For this analysis, I categorize analysts into two groups: those who have previously experienced a weather shock (treated) and those who have never experienced or have yet to encounter a weather shock (control), focusing on firms directly affected by weather events (within a 100 miles radius from the event).

Table 10 shows that analysts with weather event experience become more optimistic and accurate in their firm-level forecasts post-event (columns 1-2) compared to analysts with no experience. This effect is particularly pronounced for firms with high physical risk and those in climate sensitive sectors (columns 3-4). These findings suggest that firsthand weather event experience helps analysts acquire valuable insights, improving their ability to forecast the impact on companies.

Lastly, I examine whether analysts with previous experience of weather events differ in the types of firms they cover and the questions they ask during earnings calls. In this analysis, the main independent variable takes a value of 1 if the analyst has experienced a weather event and 0 otherwise. Since this analysis does not employ the DID methodology, I include both analyst and quarter-year fixed effects to control for unobserved heterogeneity across analysts and time.³⁷

For each quarter, I construct a variable that calculates the number of firms an analyst covers and the proportion of firms facing high physical, transition, and climate risks (i.e., both physical and transition risks). Additionally, I source earnings call transcripts from 2006 to 2018 using WRDS and matched them to my sample of analysts, identifying 1,398 analysts who had asked at least one question during that period. I then define climate-related questions if they contain any unigrams and bigrams from Sautner et al. (2023). My main dependent variables are the number of firms they cover and the questions an analyst asks about physical, regulatory, and opportunity risks within a given quarter.³⁸

³⁶For a detailed explanation of the data construction process, see Section F in the Appendix.

³⁷Note that I am using analysts with more than one climate event experience, hence the number of analysts is greater than in the baseline analysis.

³⁸The complete list of bigrams is not publicly available, I then use the top 100 bigrams from "Table IA.IX: Top Bigrams for Topic-Based Climate Change Exposure Measures" in Sautner et al. (2023), removing deceptive terms and supplementing with additional unigrams and bigrams. See Table A22 for the full list.

Table 11 shows that analysts with weather event experience tend to cover more firms but these firms have on average lower climate risks. Table 12 reveals that analysts with weather event experience are more likely to ask questions about physical risks, aligning with [Israelsen and Kong \(2024\)](#), who find that analysts exposed to wildfire smoke are more inclined to discuss climate-related issues. No significant effects are observed for transition or opportunity risks.

Overall, these results indicate that analysts are becoming more conscious of climate risks, as evidenced by their increased focus on climate-related questions and a shift away from covering high climate risk firms.

6.6 Aggregate Market Effect

In this section, I investigate whether the increased accuracy of analysts near the event spills over to other financial players, such as analysts not exposed to the event but covering the same firms as the treated analysts, brokerage firms employing these analysts, and investors trading in these companies.

Spillover to distant analysts. To examine spillovers to distant analysts (those who did not experience the weather event), I study whether improved forecast accuracy by weather-exposed analysts influences other analysts who cover the same firm but are geographically distant from the event. The treated group includes distant analysts who forecast the same firms as analysts near the weather event. The control group consists of distant analysts forecasting firms with no analysts located near the event. Consistent with the baseline analysis, all firms are distant from the event itself.

To ensure meaningful comparisons, I restrict the sample to firms that, around each event, operate in the same sector and are forecasted over the same horizon. I also employ propensity score matching based on firm characteristics including analyst coverage, sales, size, leverage, operating income, ROA, stock price, and market value. The analysis examines four dependent variables measured monthly at the firm level: forecast bias, forecast error, consensus (average forecast), and dispersion (standard deviation of forecasts) across distant analysts. The regressions control for company coverage, size, leverage, sales, and operating income, with fixed effects for shock, forecast horizon, and firm sector. Standard errors are clustered at the firm state level.

Table 13 shows that distant analysts, who forecast the same firms as analysts impacted by a weather event, exhibit reduced forecast dispersion and increased pessimism, but there is no overall effect on forecast accuracy. This indicates that distant analysts tend to become more pessimistic. As a result, some analysts improve in accuracy while others become less accurate, leading to no significant overall change in their collective accuracy. This confirms that such events are highly salient, affecting all analysts, even those distant from the event. However, analysts who do not experience the event firsthand do not gain indirect insights from treated analysts, resulting in no improvement in their forecast errors.³⁹

Brokerage effect. To investigate whether brokerage firms capitalize on analysts' increased forecast accuracy, I examine how brokerage firms adjust their analyst workforce following weather events. Ideally, this analysis would compare brokerage firms located near weather events to those that are distant. However, because large brokerage firms typically have multiple locations across the U.S. and my sample of geographically localized analysts is limited, I analyze the data at the aggregate brokerage level without accounting for geographical location.

For each brokerage firm, I track annually the total number of employed analysts, the number of firms they forecast, the number of firms located near weather events, and the number of analysts situated near weather events. Note that the measure of treated analysts may contain measurement errors due to sample size limitations. To address potential confounds, I cluster standard errors at the brokerage level and include brokerage and year-fixed effects to account for unobserved heterogeneity.

Table 14 investigates how the number of treated firms and treated analysts affects the number of analysts employed by a brokerage firm in the following year. I control for the number of firms forecasted in the previous year, which, as expected, correlates positively with future analyst employment.

The results show that while the number of firms near weather events is not significantly correlated with future analyst employment (column 1), having more weather-exposed analysts predicts increased analyst hiring in the following period (column 2). When splitting the sample between large brokerages (i.e. more than 13 analysts) and small brokerages, I find that large brokerages

³⁹Table A14 investigates whether distant analysts learn from skilled analysts with weather event experience. For performance and timeliness-based analysts, the results confirm no effect on accuracy but show increased pessimism and reduced dispersion among distant analysts. However, when examining experienced analysts, distant analysts become less accurate, a result that requires further investigation.

drive the positive hiring effect, while small brokerages tend to reduce their analyst count as the number of firms affected by weather events increases.

Furthermore, Table 15 examines whether brokerage houses' exposure to weather events influences the types of firms they choose to cover. Using a linear probability model, I analyze whether having more weather-exposed analysts predicts the characteristics of firms that brokerage houses follow, tracking each covered firm annually. The results reveal that larger brokerage houses are more likely to follow firms with high transition risks, and this tendency is stronger when they have more analysts who have experienced extreme weather events. These findings remain robust even after controlling for brokerage house fixed effects.

Overall, larger brokerages appear to invest in expanding their analyst coverage following weather events, while smaller brokerages contract their coverage, perhaps due to resource constraints or different strategic priorities. Moreover, brokerage houses may be responding strategically to their analysts' weather exposure by building expertise in climate sensitive sectors.

Stock price reaction. To assess the economic impact of my findings and the informative value of analysts' revisions, I examine how firms' stock prices respond to post-event analyst revisions. Following Malloy (2005), I conduct cross-sectional regressions of average excess returns (AAR) comparing revisions from analysts near weather events to those from distant analysts (see Appendix F for the methodology). In this analysis, I differentiate between *good* and *bad* news, where good (bad) news represents revisions that are higher (lower) than both previous forecasts and consensus.

Table A15 compares the impact of forecast revisions between treated and control analysts on average unexpected price returns across various time windows around weather events. Column 1 shows no significant difference in stock returns following forecast revisions between treated and control analysts. However, separating positive from negative revisions (columns 2 and 3) reveals an interesting pattern: in the first day following revisions, stocks show lower returns after positive revisions and higher returns after negative revisions. This suggests that investors initially discount positive news while placing greater weight on negative news from weather-exposed analysts. These results contrast with the expected response, indicating an inconsistent market reaction.

For firms with high climate risks (columns 5 and 7), I observe a delayed reaction: positive revisions lead to higher returns after one and two months, suggesting that the market eventually

incorporates positive information, albeit with a lag. Similarly, negative revisions result in lower returns after two months, indicating a gradual market adjustment to pessimistic outlooks. In contrast, firms with low climate risk exposure show no such effects, suggesting either more efficient information processing or reduced market sensitivity to analyst revisions for these firms.

These results suggest that while the market responds to forecast revisions, the complete incorporation of this information, particularly for high-risk firms, occurs gradually. However, it is important to note that these delayed reactions cannot be definitively attributed solely to analysts' forecast revisions. Other factors may contribute to these patterns, making it challenging to isolate whether the market's response is primarily driven by analysts' adjustments following weather events.

6.7 Robustness Tests

A series of robustness checks are conducted to test the validity of the results.

Analysts' location. I start by showing that the findings are not driven by analysts in New York and California, where most of my analysts are. Table 16 shows that the findings remain robust when excluding analysts from these states. Then, I examine the robustness of the results by controlling for different analyst distances from the event. Table 17 shows that analysts within a 50-mile radius of the event exhibit a larger impact on bias and error, with a decrease of 13 and 23 percentage points, respectively. In the 100-200 mile range, the effect on bias is even larger in magnitude but not statistically significant, and beyond 200 miles, there is no effect.

Firms' location. One major limitation of this study is the reliance on firms' headquarters as the firms' location. This is problematic since firms often have multiple locations, thus there is the possibility of incorrectly assuming that a firm was not affected when it was. However, this concern is partly addressed by ensuring that these firms' fundamentals remain unchanged during the events.

To address this limitation, I utilize the National Establishment Time-Series (NETS) Database to incorporate information about the establishments of U.S. firms, including their corresponding coordinates. In my baseline analysis, I successfully link 899 firms to their respective establishment locations.

In columns 1 and 2 of Table 18, I observe that analysts become more accurate for firms with establishments located more than 100 miles from the event. Columns 3 and 4 confirm that there are no statistically significant results for firms with establishments within 100 miles of the event's location. Lastly, in columns 5 and 6, I replicate the baseline analysis by excluding firms that are identified in the NETS database as being near the event's location. This re-examination of my primary findings further supports the baseline results.⁴⁰

Analysts' social connection. I explore whether the analysis may be subject to downward bias due to potential communication between treated and control analysts. To assess the impact of social connections, I use the Social Connectedness Index (SCI) obtained from Bailey et al. (2018), which represents the relative probability of a Facebook friendship connection between individuals in two locations. I then repeat the analysis by considering only those control and treated analysts in counties that are socially connected (i.e., the top decile of the SCI index for the treated analysts' county) and not socially connected (i.e., all the others). Table A16 shows that the results are driven by socially connected counties, indicating that my documented effect could potentially be a lower bound, as analysts in the control group could also revise their forecasts due to their connections with the treated group.

Mean-reversion. To rule out the possibility that the observed effect is due to mean reversion, I perform a placebo test by randomly generating weather event dates at the locations where my sample of weather events occurred.⁴¹ Figure A8 shows the estimated effects on forecast bias and error, with mixed results and only one of 30 events being statistically significant at a 5% significant level. This suggests that the study's findings are not driven by mean reversion.

⁴⁰In the Appendix, section E shows that the results appear to be driven by companies with business locations in the same state as the shock. While this could be problematic, given that my methodology relies on the companies being unaffected by the event, it also suggests that analysts may gather some information about the firms' business operations from the event, even if these events do not directly impact the companies' fundamentals.

⁴¹The results remain consistent when generating 51 random dates at 51 different locations across the United States.

7 Conclusion

This study deepens our understanding of how weather shocks affect analysts' earnings forecasts, showing that experiences of extreme weather events lead to improved forecast accuracy. This effect is more pronounced for firms with high climate risks and in environments with greater asymmetric information.

The evidence suggests that weather shocks provide analysts with insights into the financial implications of climate change, with the most substantial gains observed among skilled analysts—those with more experience, higher performance, and greater timeliness in forecasts. This aligns with the rational attention allocation theory, underscoring that skilled analysts are better equipped to acquire and integrate climate-related information into their forecasts.

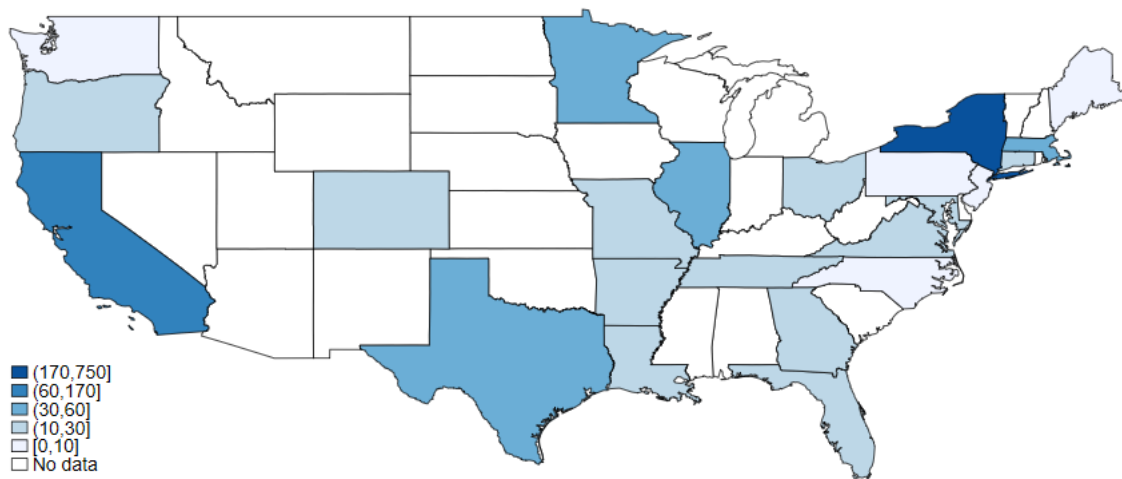
Additionally, analysts become more accurate in their stock price forecasts and ask more climate-related questions during earnings calls. Yet, despite improved forecast accuracy, stock returns show no reaction to these revisions, and this increased accuracy does not appear to benefit analysts who are geographically distant from the weather events.

On an aggregate level, large brokerage firms capitalize on this enhanced accuracy by expanding their analyst teams and increasing coverage of high climate risk firms.

Overall, these findings suggest that alongside improved climate disclosure, policy measures should support training and educational initiatives for analysts. Such efforts would facilitate the accurate integration of climate risks into forecasts, advancing climate risk awareness in the financial sector.

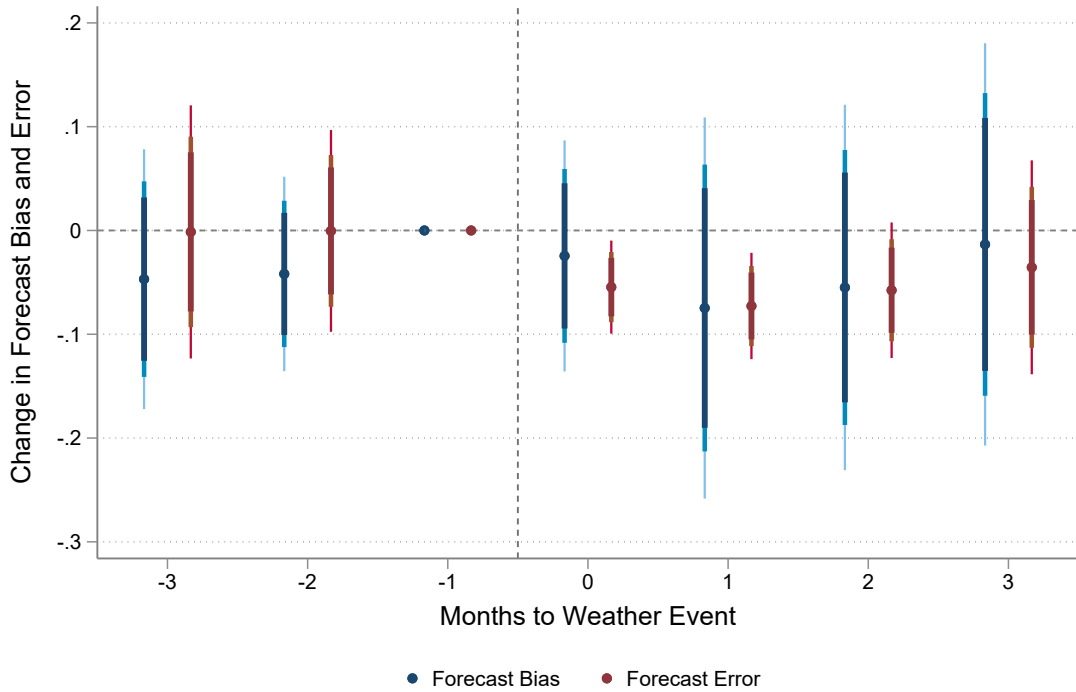
Figures

Figure 1: Location of analysts by U.S. state



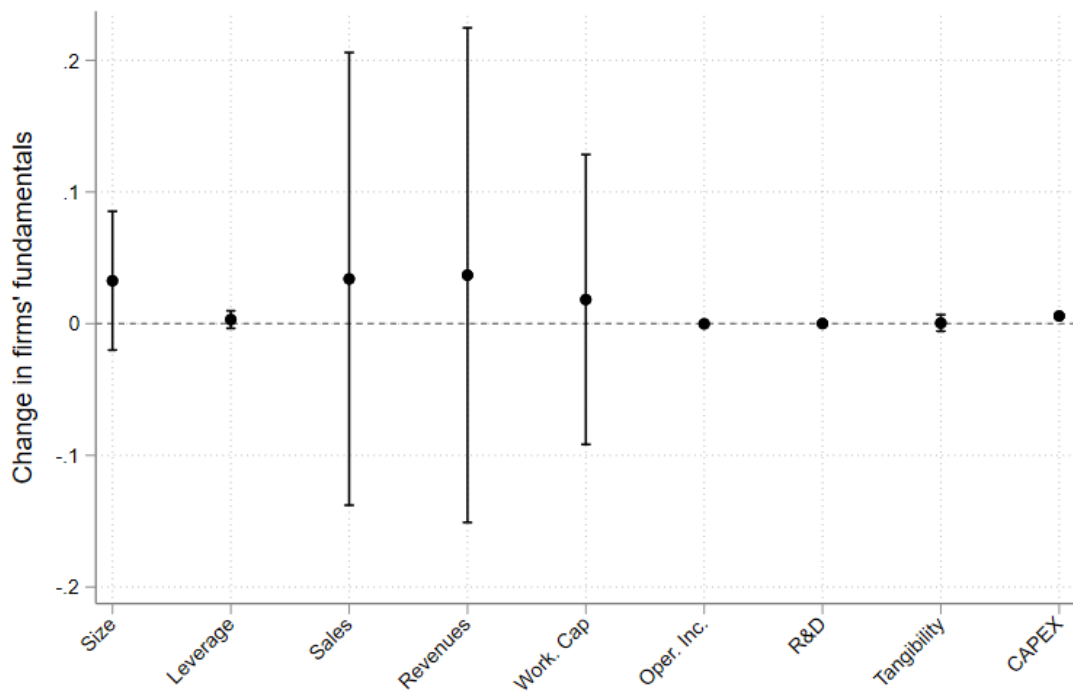
Note: the graph maps the sample of matched analysts' locations to weather events from 2000 to 2020 by US state. The state of New York has the highest number of analysts with 690 individuals, followed by 157 in California, 54 in Minnesota, and 53 in Illinois.

Figure 2: Parallel trend



Note: the figure plots the estimated coefficients for the pre- and post-period interactions between treatment and the time variable, with 99%, 95%, and 90% confidence intervals. The omitted month is the one immediately preceding the weather event. The specification includes all covariates, with the shock ID interacted with forecast horizon fixed effects. The event window spans 3 months before and 3 months after the event. The figure shows forecasts for all analysts in the sample; if an analyst did not issue a forecast in months -3 or -2, their data is filled backwards. In the Appendix, Figure A5 presents results for analysts who issued at least one forecast in each month before the event, showing robust findings. Standard errors are clustered by the analysts' office location.

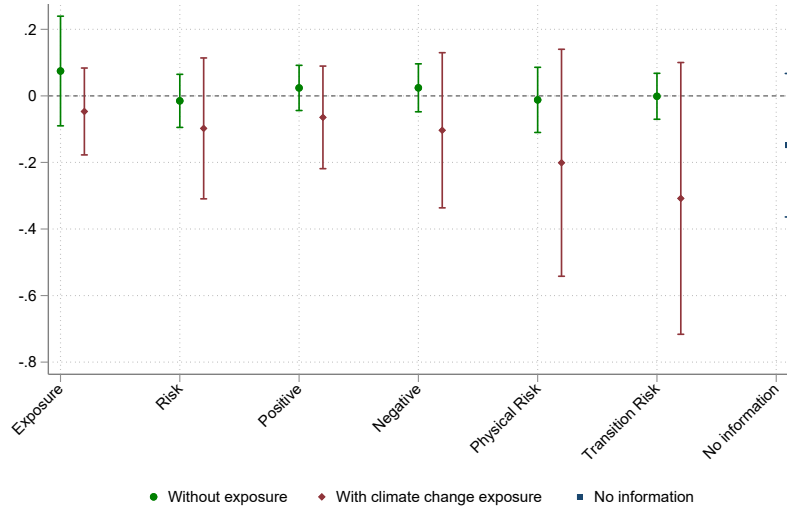
Figure 3: Changes in firms' fundamentals around weather events



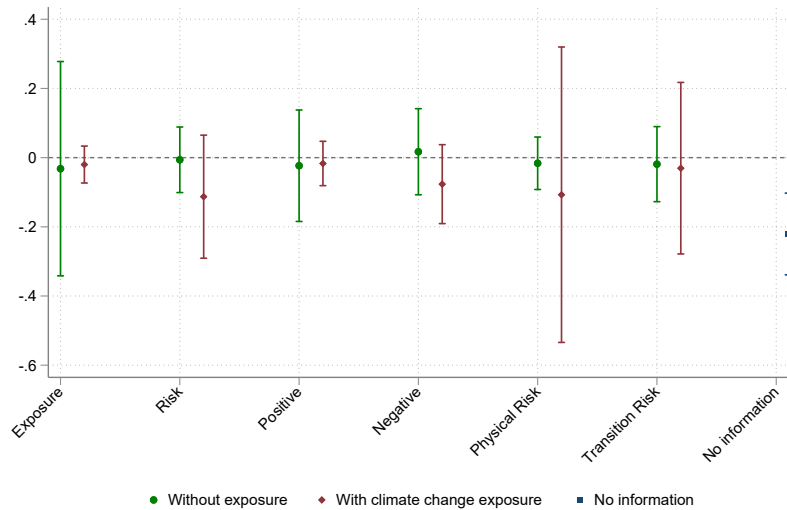
Note: the graph illustrates differences in firms' fundamentals before and after a weather event. The independent variable is an indicator that takes the value of one after the weather event and zero before. I selected the first available data for the forecasted firm one quarter before and the quarter of the weather shock. Sales, revenue, and working capital are scaled by 1000 for ease of comparison. The table includes fixed effects for the weather event. To ensure that any effect of the shock is incorporated, figure A4 shows the results using only fundamentals announced one quarter after the weather shock quarter.

Figure 4: Effect on analysts' forecasts by previous year firms' climate risks exposure

(a) Forecast Bias

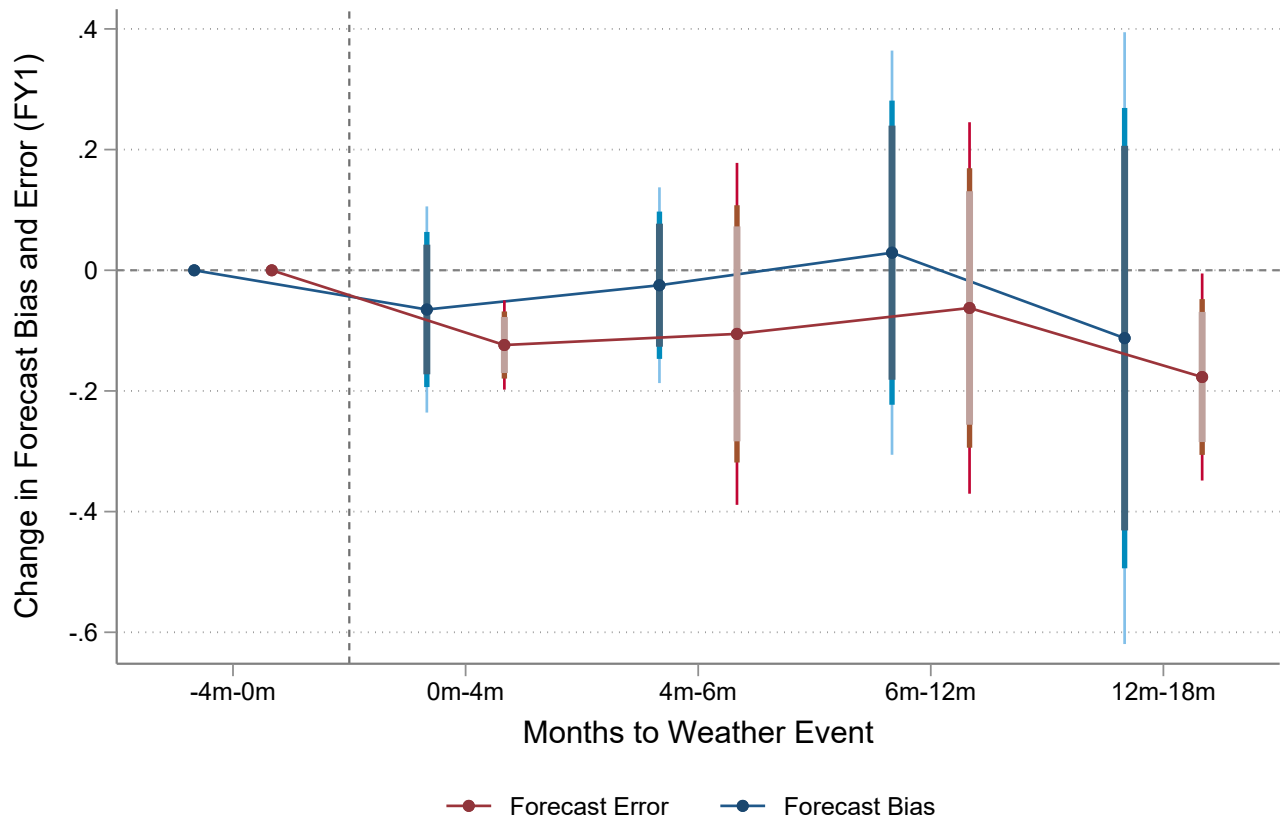


(b) Forecast Error



Note: figures plot the estimated effect size for firms without exposure to climate change (green), firms with exposure (red) and firms with no information (blue). Climate change exposure is estimated using earnings call transcripts from the previous year by [Sautner et al. \(2023\)](#). Note that the difference between “no information” and “without exposure” is that the former refers to companies with no estimated score due to a lack of data or an earnings call conducted by the company. The effect size is computed by running the baseline DID regression separately for firms in each group. For each bigram score of [Sautner et al. \(2023\)](#), I create a binary variable indicating whether there was a non-zero mention in an earnings call in the previous year. *Exposure* refers to any mention of climate-related words, while *Risk* is defined as a climate-related word appearing in the same sentence as the words *risk* or *uncertainty*. *Positive* and *Negative* depend on whether the climate-related word was near a positive or negative tone word. *Transition* and *Physical risk* represent specific bigrams associated with these specific risks. The confidence intervals are at a 5% significant level.

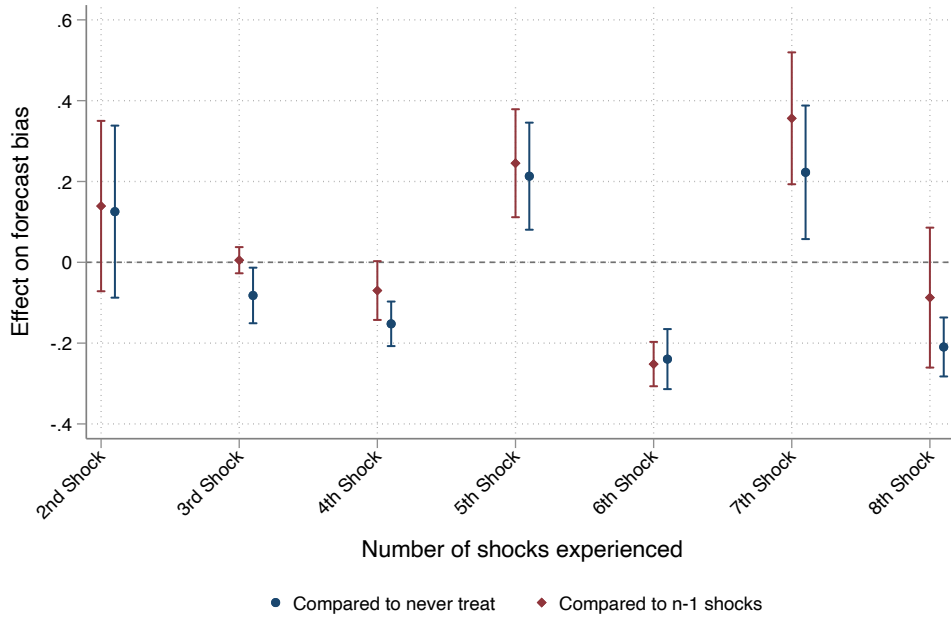
Figure 5: Persistence of the effect after the event



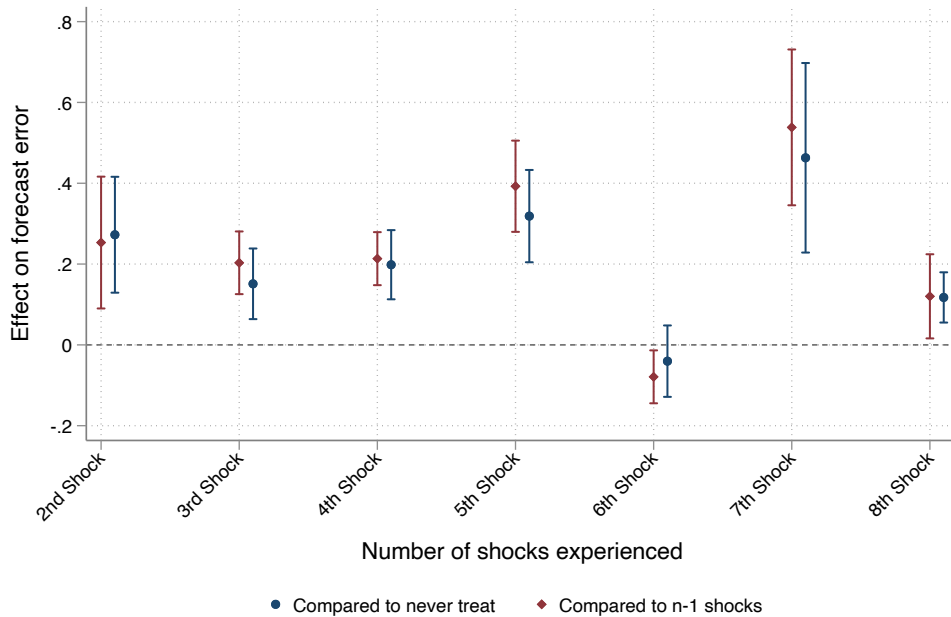
Note: the figure plots the estimated coefficients from the DID with 99%, 95%, and 90% confidence intervals for error (red) and bias (blue) for 1-year ahead horizon (FY1). The specification includes all covariates and forecasted horizon*weather shock fixed effect. The analysis keeps the first forecast issued within each specific time window. The standard errors are clustered at the analyst's office location. In the appendix, figure A9 plots for all horizons.

Figure 6: Multiple experiences of weather events

(a) Forecast Bias



(b) Forecast Error



Note: figures plot the estimated coefficients from the DID with 95% confidence intervals for forecast bias (a) and error (b). The treated group includes analysts experiencing more than one weather event, while the control group is either analysts with no experience of weather events (blue) or one less experience compared to the treated group (red). The specification includes all covariates and forecasted horizon*weather shock fixed effect. The analysis keeps only one forecast before and after the event. The standard errors are clustered at the analyst's office location.

Tables

Table 1: Summary statistics

	Mean	p50	SD	Min	Max
forecast bias (%)	0.75	0.06	3.53	-29.90	60.38
forecast error (%)	1.84	0.66	3.33	0.00	60.38
companies followed	14.57	14.00	6.44	1.00	47.00
firm experience	1.98	1.00	2.26	0.00	19.00
general experience	4.27	3.00	3.85	0.00	19.00
industries followed	1.79	1.00	1.10	1.00	11.00
brokerage size	67.01	51.00	52.96	1.00	284.00
firm size	7.61	7.58	1.79	1.43	14.72
leverage	0.19	0.15	0.21	0.00	3.95
market value	2.01	1.45	2.02	0.02	45.48
stock price	39.43	28.31	45.80	0.62	2027.09
ROA	0.00	0.01	0.08	-3.98	0.67
<i>N</i>	57586				

Note: the table reports the summary statistics for the sample of my main analysis. Forecast bias is defined as the difference between the earnings forecast of equity analyst i for firm f in month t minus the actual earnings divided by the stock price for firm f in the previous quarter, while forecast error differs from forecast bias only by having the numerator in absolute terms. Both are expressed in percentages. See tables 20 and 21 for a description of the other variables used.

Table 2: Description of salient weather events near analysts' office location

Event Type	Av. Total Damage (Mil. \$)	Av. Total Deaths	Av. Total Injuries	Number of Events
Extreme Cold/Wind Chill	0	10	0	1
Thunderstorm Wind	0	1	100	1
Winter Weather	0	1	200	1
Heavy Snow	0.80	0	100	1
Heat	45.94	11	54	10
Tornado	76.31	7	120	7
Tropical Storm	109.20	11	77	2
Debris Flow	289.37	18	89	2
Storm Surge/Tide	1082.22	0	0	1
Flood	1155.12	0	0	2
Wildfire	1391.57	4	45	1
Hurricane (Typhoon)	1850.46	1	10	3
Hail	2185.69	0	0	1
Flash Flood	3850.36	7	0	2
Coastal Flood	5073.30	1	0	1

Note: the table reports the selected salient weather events that are 100 miles from an analyst location. The table shows the average economic damages caused by each type of shock (converted in 2013 USD), the average number of related deaths and injuries, and the respective number of shocks across the dataset. Given my empirical strategy filters—only forecasts for firms located 100 miles from the event, a control group composed of never-treated analysts, and a treated group of analysts exposed to the event only once—only a small number of shocks are selected.

Table 3: Climate beliefs after extreme weather events

	Google Search of “Climate Change”			Global Warming is Happening			Worried about Global Warming		
	(1)	(2)	(3)	(4)	(5)	(6)	(7)	(8)	(9)
Fatalities	0.0955* (0.0496)			0.365 (0.242)			0.579*** (0.198)		
Injuries		0.00942 (0.0868)			0.518 (0.475)			0.265 (0.472)	
1 bil. \$ damages			0.0860** (0.0327)			0.528* (0.275)			0.401** (0.180)
Year FE	Yes	Yes	Yes	Yes	Yes	Yes	Yes	Yes	Yes
State FE	Yes	Yes	Yes	Yes	Yes	Yes	Yes	Yes	Yes
R^2	0.825	0.825	0.825	0.966	0.966	0.966	0.978	0.977	0.977
N	5028	5028	5028	561	561	561	561	561	561

Note: the table reports the changes in Google search interest after the events (columns 1-3) and the changes in responses from the Yale Climate Opinion Map (columns 4-9). I use the methodology from [Alekseev et al. \(2021\)](#) to estimate the log-scaled Google search interest for the topic “climate change” in the states where the analysts are located. Additionally, I utilize data from the Yale Climate Opinion Maps 2023 ([Howe et al., 2015](#)). The dependent variable “Global Warming is Happening” represents the estimated percentage of respondents who believe that global warming is occurring, while “Worried about Global Warming” reflects the estimated percentage of respondents who are somewhat or very worried about global warming, expressed as percentages at the state-year level. Both dependent variables are led by one year. Standard errors are clustered at the state-month (col. 1-3) and state (col. 4-9), and observations are weighted by each state’s population size.

Table 4: Baseline results

	(1)	(2)	(3)	(4)
	Bias	Error	Bias	Error
post	0.00861 (0.0331)	-0.0350** (0.0144)	0.00858 (0.0330)	-0.0350** (0.0144)
treat	-0.159 (0.164)	-0.0760 (0.0814)	-0.102 (0.144)	0.0501 (0.0769)
treat*post	-0.0587 (0.0660)	-0.0721** (0.0274)	-0.0587 (0.0658)	-0.0721** (0.0274)
Controls	No	No	Yes	Yes
Shock*horizon FE	Yes	Yes	Yes	Yes
R^2	0.0720	0.113	0.264	0.309
N	57586	57586	57576	57576

Note: the table shows the baseline difference-in-differences for 1 to 5 years EPS forecasts. The weather shock indicator and the horizon fixed effect are incorporated to account for shock and horizon-specific characteristics. The controls used are forecast days gap, broker size, companies followed, firms experience, industries followed, and firm size. The regression also controls for bias and error from the pre-treatment period. The dependent variables are multiplied by 100 for interpretability purposes. The standard errors are clustered at the office location.

Table 5: Breakdown by forecast horizon

	Forecast Bias				Forecast Error				LTG
	(1) 1-Year	(2) 2-Year	(3) 3-Year	(4) 4-Year	(1) 1-Year	(2) 2-Year	(3) 3-Year	(4) 4-Year	(1) LTG
treat*post	-0.0598 (0.0568)	-0.0904 (0.0964)	-0.0283 (0.140)	0.299 (0.438)	-0.153*** (0.0330)	-0.0376 (0.0242)	0.0465 (0.0780)	1.530** (0.533)	-0.877*** (0.290)
Shock FE	Yes	Yes	Yes	Yes	Yes	Yes	Yes	Yes	Yes
R^2	0.268	0.243	0.239	0.291	0.270	0.249	0.261	0.391	0.873
N	30566	24832	1832	286	30566	24832	1832	286	2173

Note: the table shows the baseline difference-in-differences for yearly forecasts dis-aggregated at different forecast horizons: 1 to 4 years and long-term growth rate. For data limitation, 5-year forecasts are not included. The control variables are forecast days gap, broker size, companies followed, firms experience, industries followed and firm size. The regression also controls for bias and error from the pre-treatment period. The dependent variables are multiplied by 100 for interpretability purposes. The standard errors are clustered at the analyst's office location.

Table 6: Analysts with heatwave exposure and firms' climate risk

Firms	All		High Heatwave Risk		Low Heatwave Risk	
	(1) Bias	(2) Error	(3) Bias	(4) Error	(5) Bias	(6) Error
treat*post	0.0454 (0.0768)	-0.126* (0.0723)	-0.00540 (0.150)	-0.267** (0.126)	0.0662 (0.0529)	-0.0392 (0.0584)
Controls	Yes	Yes	Yes	Yes	Yes	Yes
Shock*horizon FE	Yes	Yes	Yes	Yes	Yes	Yes
R^2	0.336	0.291	0.271	0.201	0.387	0.376
N	6210	6210	2172	2172	4038	4038

Note: the table presents the baseline difference-in-differences for firms with high and low heatwave risks when an analyst experienced a heatwave for 1-year ahead forecasts (table A4 reports for all horizons). Firms with high heatwave risk are those with above-median heatwave risks compared to other firms in the sample. Each specification includes weather shock times horizon fixed effect to account for shock and horizon-specific characteristics. The controls used are forecast days gap, broker size, companies followed, firms experience, industries followed, and firm size. The regression also controls for bias and error from the pre-treatment period. The dependent variables are multiplied by 100 for interpretability purposes. The standard errors are clustered at the office location.

Table 7: Breakdown by asymmetric information

Panel A	CDP Disclosure		No CDP Disclosure		High Climate Risk		Low Climate Risk	
	(1) Bias	(2) Error	(3) Bias	(4) Error	(1) Bias	(2) Error	(3) Bias	(4) Error
treat*post	-0.240*** (0.0853)	-0.0252 (0.102)	-0.0428 (0.0671)	-0.0703** (0.0305)	-0.119 (0.0889)	-0.0570* (0.0292)	0.0181 (0.0287)	-0.102** (0.0383)
R ²	0.174	0.176	0.279	0.326	0.199	0.260	0.516	0.526
N	4372	4372	53204	53204	39102	39102	18474	18474
Panel B	High Analyst Coverage		Few Analyst Coverage		High Risk State		Low Risk State	
	(1) Bias	(2) Error	(3) Bias	(4) Error	(1) Bias	(2) Error	(3) Bias	(4) Error
treat*post	-0.0792 (0.0837)	-0.0369* (0.0207)	-0.00195 (0.0672)	-0.159* (0.0864)	-0.0657 (0.0813)	-0.0372 (0.0240)	-0.00431 (0.0541)	-0.193*** (0.0469)
Controls	Yes	Yes	Yes	Yes	Yes	Yes	Yes	Yes
Shock*horizon FE	Yes	Yes	Yes	Yes	Yes	Yes	Yes	Yes
R ²	0.233	0.268	0.323	0.382	0.208	0.266	0.372	0.400
N	41430	41430	16146	16146	36080	36080	21496	21496

Note: the table shows the baseline difference-in-differences for firms with high and low asymmetric information (gray area). *CDP Disclosure* refers to companies that disclose their environmental impact to the Carbon Disclosure Project. *High Climate Risk* includes companies in sectors classified as high climate risks, following [Choi et al. \(2020\)](#). *High Analyst Coverage* refers to companies in the top quartile of analyst coverage, while *Few Analyst Coverage* includes all others. *High-Risk State* denotes states that have experienced more than four significant weather events. Each specification includes weather shock times horizon fixed effect to account for shock and horizon-specific characteristics. The controls used are forecast days gap, broker size, companies followed, firms experience, industries followed, and firm size. The regression also controls for bias and error from the pre-treatment period. The dependent variables are multiplied by 100 for interpretability purposes. The standard errors are clustered at the analyst's office location.

Table 8: Attention vs. rational allocation: analysts' attention and experience

Panel A (FY1)	Inattentive		Attentive		High Experience		Low Experience	
	(1)	(2)	(3)	(4)	(1)	(2)	(3)	(4)
	Bias	Error	Bias	Error	Bias	Error	Bias	Error
treat*post	-0.131*	-0.186***	0.0300	-0.170**	-0.0626	-0.281**	-0.0640	-0.120***
	(0.0780)	(0.0584)	(0.0522)	(0.0706)	(0.0919)	(0.111)	(0.0564)	(0.0286)
R ²	0.296	0.301	0.167	0.172	0.361	0.353	0.239	0.244
N	19892	19892	7096	7096	8998	8998	21568	21568
Panel B (all horizons)	Inattentive		Attentive		High Experience		Low Experience	
	(1)	(2)	(3)	(4)	(1)	(2)	(3)	(4)
	Bias	Error	Bias	Error	Bias	Error	Bias	Error
treat*post	-0.112	-0.133***	0.0735	-0.0755	-0.0365	-0.149*	-0.0722	-0.0612*
	(0.0833)	(0.0341)	(0.0845)	(0.0630)	(0.106)	(0.0788)	(0.0633)	(0.0318)
Controls	Yes	Yes	Yes	Yes	Yes	Yes	Yes	Yes
Shock*horizon FE	Yes	Yes	Yes	Yes	Yes	Yes	Yes	Yes
R ²	0.319	0.352	0.220	0.280	0.335	0.357	0.247	0.299
N	36042	36042	15027	15027	16513	16513	41063	41063

Note: the table presents the baseline difference-in-differences for subgroups of analysts based on high and low attention and experience. Analysts with an attention score (number of forecasts/number of companies followed) equal to or above the median (10) in the previous year are labelled as *attentive*. *High experience* refers to analysts in the top decile of years worked (more than 13 years) as analysts. Each specification includes a weather shock times horizon fixed effect to account for shock- and horizon-specific characteristics. The controls used are forecast days gap, broker size, companies followed, analyst experience, industries covered, and firm size. The regression also controls for bias and error from the pre-treatment period. The dependent variables are multiplied by 100 for interpretability. Standard errors are clustered at the analyst's office location.

Table 9: Impact of institutional ownership, firms' importance and brokerage characteristics

	Institutional Owner				Relative Importance				Brokerage Firms			
	High		Low		High		Low		High		Low	
	(1)	(2)	(3)	(4)	(5)	(6)	(7)	(8)	(9)	(10)	(11)	(12)
	Bias	Error	Bias	Error	Bias	Error	Bias	Error	Bias	Error	Bias	Error
post*treat	-0.0788	-0.126	-0.0272	-0.0551	-0.0768	-0.112***	-0.0535	-0.0250	-0.0518	-0.0625*	-0.146	-0.190
	(0.111)	(0.0890)	(0.0626)	(0.0350)	(0.0800)	(0.0269)	(0.0417)	(0.0502)	(0.0585)	(0.0349)	(0.197)	(0.192)
Shock*horizon FE	Yes	Yes	Yes	Yes	Yes	Yes	Yes	Yes	Yes	Yes	Yes	Yes
R ²	0.303	0.329	0.271	0.319	0.317	0.373	0.289	0.326	0.256	0.305	0.408	0.430
N	6701	6701	49001	49001	11557	11557	28123	28123	53552	53552	4024	4024

Note: This table presents the baseline difference-in-differences estimates for yearly forecasts. *High Institutional Owners* take the value 1 if firms are ranked in the top 25th percentile in the number of institutional owners among all covered firms in an analyst's portfolio and 0 otherwise (from Thomson-Reuters 13F Database). *Relative Importance* takes value 1 if a firm is ranked among the top 25th percentile of market cap in an analyst's portfolio. *Small Brokerage takes* the value 1 an analyst is employed within a brokerage firm above the median of its size, as quantified by the number of employees (13 employees). The control variables are forecast days gap, broker size, companies followed, firms experience, industries followed, and firm size. The dependent variables are multiplied by 100 for interpretability purposes. The standard errors are clustered at the analyst's office location.

Table 10: Analysts' bias and error for companies impacted by weather events

Firm Risk	All		High Physical Risk		Low Physical Risk		High Climate Sector		Low Climate Sector	
	Bias	Error	Bias	Error	Bias	Error	Bias	Error	Bias	Error
post*1(treated)	0.0718*	-0.0993**	0.0743	-0.0791*	0.0591	0.0500	-0.00888	-0.215**	0.123**	-0.0213
	(0.0365)	(0.0477)	(0.0445)	(0.0453)	(0.0833)	(0.0958)	(0.0826)	(0.0926)	(0.0527)	(0.0227)
Controls	Y	Y	Y	Y	Y	Y	Y	Y	Y	Y
Horizon*Firm*Shock FE	Y	Y	Y	Y	Y	Y	Y	Y	Y	Y
Analyst FE	Y	Y	Y	Y	Y	Y	Y	Y	Y	Y
R ²	0.233	0.132	0.286	0.123	0.252	0.163	0.277	0.122	0.277	0.122
N	98914	98914	55613	55613	17903	17903	41091	41091	57821	57821

Note: The table reports the difference between previously treated analysts (*treated*) forecasting firms impacted by a weather event compared to analysts with no experience of such an event. Each specification includes weather shock times horizon fixed effect to account for shock and horizon-specific characteristics. The controls used are forecast days gap, broker size, companies followed, firms experience, industries followed, and firm size. The dependent variables are multiplied by 100 for interpretability purposes. The standard errors are clustered at the office location.

Table 11: Portfolio of companies forecasted by analysts

N. Firms	Share of Forecasted Firms			
	High Physical Risk	High Transition Risk	High Climate Risk	
1(treated)	0.222***	-0.0128**	-0.0162***	-0.0312***
	(0.0730)	(0.00524)	(0.00505)	(0.00496)
Controls	Yes	Yes	Yes	Yes
Analyst FE	Yes	Yes	Yes	Yes
Quarter*Year FE	Yes	Yes	Yes	Yes
R-squared	0.862	0.481	0.506	0.611
N	61511	61511	61511	61511

Note: the table presents a regression where the variable *treated* equals 1 if the analyst has experienced at least one significant weather event. The dependent variable calculates the number of firms an analyst covers and the proportion of firms facing high physical, transition, and climate risks (i.e., both physical and transition risks) for each quarter. The table includes analyst and quarter-year fixed effects. It also includes analyst covariates such as brokerage size, number of industries and firms followed in a year, an indicator if an analyst was a top performer in the past three years, and if the analyst has many years of experience. The standard errors are clustered at the analyst level.

Table 12: Climate-related questions during earnings calls

	Number of Questions			
	Physical Risks	Regulatory Risks	Climate Opportunity	Any Climate Question
1(treated)	0.0103* (0.00576)	-0.00116 (0.00143)	0.00251 (0.00172)	0.0113* (0.00633)
Controls	Yes	Yes	Yes	Yes
Analyst FE	Yes	Yes	Yes	Yes
Quarter*Year FE	Yes	Yes	Yes	Yes
R-squared	0.0849	0.0517	0.0696	0.0880
N	16615	16615	16615	16615

Note: the table presents a regression where the variable *treated* equals 1 if the analyst has experienced at least one significant weather event. The dependent variable is the number of questions an analyst asks in a quarter regarding physical, regulatory, and opportunity risks, as well as any of the three. The table includes analyst and quarter-year fixed effects. It also includes analyst covariates such as brokerage size, number of industries followed in a year, an indicator if an analyst was a top performer in the past three years, and if the analyst has many years of experience. The sample includes 1,398 analysts who asked at least one question during earnings calls from 2006-2018. The table includes analysts and quarter*year fixed effects. The standard errors are clustered at the analyst level.

Table 13: Spillover effect to analysts distant to the event

	(1) Consensus	(2) Dispersion	(3) Bias	(4) Error
post*1(analyst near)	-0.0287 (0.0180)	-0.0166** (0.00743)	-0.161*** (0.0527)	0.0326 (0.0645)
Controls	Y	Y	Y	Y
Shock*horizon*Sector FE	Y	Y	Y	Y
R^2	0.440	0.290	0.216	0.330
N	11740	11740	11740	11740

Note: the table presents the baseline difference-in-differences for the aggregate effect on consensus, dispersion, bias, and error at the company level for analysts distant from the event. $1(\text{analyst near})$ takes value one for companies with at least one analyst near the event, and treated analysts are those forecasting the company but distant from the event. Control analysts are those without any treated analysts near the event. Treated and control companies are required to be in the same sector, state, shock event, and forecast horizon, and are matched based on coverage, sales, firm size, leverage, operating income, ROA, stock price, and market value. The control variables include company coverage, firm size, leverage, sales, and operating income. The dependent variables are multiplied by 100 for interpretability. Standard errors are clustered at the state level and at the office location.

Table 14: Impact of weather-event exposure on future hiring at brokerage firms

	Number of analysts by brokerage firm					
	All		Large Brokerage		Small Brokerage	
	(1)	(2)	(3)	(4)	(5)	(6)
N. treated firms _{t-1}	0.00161 (0.0117)		-0.000963 (0.0163)		-0.0285** (0.0140)	
N. treated analysts _{t-1}		0.113*** (0.0420)		0.108** (0.0500)		-0.0000312 (0.0700)
N. firms _{t-1}	0.0592*** (0.00491)	0.0578*** (0.00478)	0.0672*** (0.00720)	0.0656*** (0.00716)	0.0591*** (0.00509)	0.0582*** (0.00502)
Brokerage FE	Y	Y	Y	Y	Y	Y
Year FE	Y	Y	Y	Y	Y	Y
R ²	0.953	0.954	0.941	0.941	0.777	0.777
N	3665	3665	1097	1097	2554	2554

Note: the dependent variable in the regression is the number of analysts at the brokerage level. The main independent variables are the number of firms forecast by the company in the previous year (*N. firms*), the number of analysts near a weather event in the previous year (*N. treated analysts*), and the number of forecasted firms near a weather event in the previous year (*N. treated firms*). Large (small) brokerages are defined as those with 13 or more (fewer) analysts. The regression includes year and brokerage fixed effects. Standard errors are clustered at the brokerage level.

Table 15: Firms covered by brokerage firms

	1(High Market Cap) (1)	1(High PR) (2)	1(High TR) (3)	1(High Market Cap) (4)	1(High PR) (5)	1(High TR) (6)
N. treated firms	0.00563 (0.00411)	-0.00901* (0.00530)	0.00636 (0.00401)	0.00510 (0.00358)	0.000707 (0.00347)	-0.00365 (0.00283)
N. treated analysts	0.00666* (0.00384)	-0.0000281 (0.00439)	0.0133*** (0.00403)	0.00510 (0.00374)	-0.000487 (0.00332)	0.00463* (0.00275)
Year FE	Yes	Yes	Yes	Yes	Yes	Yes
Firm Sector FE	Yes	Yes	Yes	Yes	Yes	Yes
Brokerage FE	No	No	No	Yes	Yes	Yes
R ²	0.412	0.0585	0.375	0.418	0.0652	0.382
N	124592	124592	124592	124592	124592	124592

Note: the table reports the linear probability model of a brokerage firm following a company with a high market cap, high physical risk (PR), and high transition risk (TR), based on the number of analysts and firms near an event in the previous year. Control variables include ROA, stock price, market value, leverage, number of analysts covering the company, firm size, and sales from the previous year. Standard errors are clustered at the forecasted firm level.

Table 16: Robustness: excluding New York or California

Excluding:	New York		California	
	(1) Bias	(2) Error	(3) Bias	(4) Error
treat*post	0.0752 (0.0520)	-0.131*** (0.0426)	-0.0992 (0.0608)	-0.0761** (0.0297)
Controls	Yes	Yes	Yes	Yes
Shock*horizon FE	Yes	Yes	Yes	Yes
R^2	0.287	0.328	0.303	0.345
N	43215	43215	41248	41248

Note: the table shows the baseline difference-in-differences for 1 to 5 years EPS forecasts. The weather event indicator and the horizon fixed effect are incorporated to account for event and horizon-specific characteristics. The controls used are forecast days gap, broker size, companies followed, firms experience, industries followed, and firm size. The dependent variables are multiplied by 100 for interpretability purposes. The standard errors are clustered at the office location.

Table 17: Robustness: analysts' distance from the weather event

Distance (miles)	≤ 50		100-200		200-300	
	(1) Bias	(2) Error	(3) Bias	(4) Error	(5) Bias	(6) Error
treat*post	-0.133 (0.139)	-0.214*** (0.0576)	-1.032 (0.889)	-0.203 (0.333)	-0.0791 (0.138)	0.0795 (0.164)
Controls	Yes	Yes	Yes	Yes	Yes	Yes
Shock*horizon FE	Yes	Yes	Yes	Yes	Yes	Yes
R^2	0.247	0.295	0.561	0.596	0.236	0.280
N	53116	53116	7882	7882	22290	22290

Note: the table presents the baseline difference-in-differences estimates for analysts at different distances from the weather events. Columns 1-2 replicate the analysis for analysts within 50 miles from the event, columns 3-4 for analysts within 100 and 200 miles, and columns 5-6 for 200 to 300 miles. Each specification includes weather shock times horizon fixed effect to account for shock and horizon-specific characteristics. The controls used are forecast days gap, broker size, companies followed, firms experience, industries followed, and firm size. The dependent variables are multiplied by 100 for interpretability purposes. The standard errors are clustered at the office location.

Table 18: Robustness: firms' NETS establishment location

Establishment	NETS > 100 miles		NETS < 100 miles		drop if NETS < 100 miles	
	(1) Bias	(2) Error	(3) Bias	(4) Error	(5) Bias	(6) Error
treat*post	-0.136 (0.158)	-0.258*** (0.0866)	0.0816 (0.0900)	0.114 (0.0962)	-0.0811 (0.0733)	-0.0992*** (0.0225)
Controls	Yes	Yes	Yes	Yes	Yes	Yes
Shock*horizon FE	Yes	Yes	Yes	Yes	Yes	Yes
R ²	0.258	0.300	0.213	0.240	0.277	0.321
N	12148	12148	4304	4304	53272	53272

Note: the table presents the baseline difference-in-differences estimates using the firm's NETS establishment location. Each specification includes forecast horizon and shock ID interacted. The controls used are forecast days gap, broker size, companies followed, firms experience, industries followed, and firm size. The dependent variables are multiplied by 100 for interpretability purposes. The standard errors are clustered at the office location.

Table 19: Variables description - Dependent Variables

Variable Name	Description
Forecast Bias	The difference between the analyst forecast and the actual earnings divided by the stock price in the previous quarter
Forecast Error	The difference between the analyst forecast and the actual earnings in absolute terms, divided by the stock price in the previous quarter
Google Search of "Climate Change"	The log scaled Google searches of the word 'climate change' in a given state in a month as in Alekseev et al. (2021)
Global Warming is Happening	The estimated percentage of respondents who believe that global warming is occurring, expressed as percentages at the state-year (Howe et al., 2015)
Worried about Global Warming	The estimated percentage of respondents who are somewhat or very worried about global warming, expressed as percentages at the state-year (Howe et al., 2015)
Long-term Growth Rate (LTG)	Forecast of the growth rate in earnings per share over a three to five-year horizon as in IBES
Consensus	Average forecast for a company in a given month
Dispersion	Standard deviation of forecasts for a company in a given month
Number of Analysts by Brokerage Firm	Total number of analysts working for a brokerage firm in a given year
Share of Forecasted Firms	The share of firms with climate risks (both transition, physical and by sector) over the total number of companies followed by an analyst in a year
Number of Questions	The number of questions an analyst asks in a quarter regarding physical, regulatory, and opportunity risks, as well as any of the three

Table 20: Variables description - Analyst level

Variable Name	Description
Forecast Day Gap	The difference in days between the forecast and earnings announcement date
Brokerage Size	How many analysts are issuing forecasts for a brokerage firm in a year
Companies Followed	How many firms are forecasted by an analyst in a year
Industries Followed	How many industries are forecasted by an analyst in a year
Firm Experience	The difference in years between the first forecast issued for firm j and the analyzed forecasts
Analyst Experience	The difference in years between the first forecast issued on IBES and the analyzed forecasts
Experienced Analyst	Analysts in the top decile of years of experience in the IBES dataset (13 years)
Lead Analyst	I construct a ratio, the Leader-Follower Ratio (LFR), defined as the cumulative days of preceding forecasts divided by the cumulative days of following forecasts, excluding the analyst's own forecasts. Analysts with a LFR score above one and in the top decile in a given year, are classified as lead analysts
Attentive Analyst	Analysts with an attention score (number of forecasts/number of companies followed) equal to or above the sample median (10) are labelled as attentive
High Risk State	State has more than the median climate shocks (4 weather shocks)
Ex-ante Optimistic (Pessimistic)	Analysts with a previous quarter average of their forecasts was above (below) consensus are defined as optimistic (pessimistic)
High Performance	I create analysts' score following Hong et al. (2000) and I select the top tercile performer based on the average performance score in the previous 3 years, both within a firm and a sector.
Analyst Political Donation	Takes the value 1 for analysts donating to a democratic party (from FEC)
State Climate Beliefs	States with high (low) climate beliefs are states in the top percentile (bottom 5 percentiles) as the percentage of the population believing that climate change is happening in 2021 (from Yale Climate Opinion Maps for 2021)
Gender	Takes the value 1 for female analysts (estimated from the analyst's first name)
Large Brokerage	Takes the value 1 for analysts employed within a brokerage firm above average regards to its size (more than 13, proxied by the number of employees)
Socially Connected	Analysts in counties socially connected calculate by Social Connectedness Index (SCI) from Bailey et al. (2018)

Table 21: Variables description - Firm level

Variable Name	Description
Firm Size	Logarithm of total assets
Leverage	Total debt (short term debt+long term debt) divided by total assets
Operating Income	Operating income before depreciation divided by total assets
Market Leverage	Market value of firm equity from CRSP divided by total assets
ROA	Income before extraordinary items divided by book assets
Stock Price	Stock price at $t - 1$
High Climate Risk (Sector)	Follow Choi et al. (2020) that categorized as high climate risk according to the IPCC, which includes agriculture, mining, utilities, construction, manufacturing, transportation, and warehousing, while classifying all other sectors as low climate risk
Physical Risk	Composite score of the company's physical risk exposure, i.e. wild-fire, coldwave, heatwave, hurricane, sea level rise, flood, and water stress (from Trucost Climate Change Physical Risk Data). Physical risk scores are represented as values from 1 (lowest risk) to 100 (highest risk) and forecasted for the year 2020 averaged across all future scenarios (high, medium, and low)
CDP Disclosure	Takes the value 1 for companies in the Carbon Disclosure Project
High Analyst Coverage	Takes the value 1 for companies in the top quartile of analyst coverage
High Physical Risk firm	Takes the value 1 for firms' physical risk score greater than the average physical risk composite score in the sample (i.e. more than 60 points)
High Heatwave Risk	Takes the value 1 for firms' score for heatwave risk greater than the median heatwave risk
High Transition Risk	Takes the value 1 for firms' transition risks in the top tercile and zero otherwise. Transition risks are proxied by Unpriced Carbon Cost adjusted EBITDA of the year 2020 (Carbon Earnings at Risks) forecasted for the year 2020 averaged across all future scenarios (high, medium, and low)
Establishment Location	Geographical coordinates of establishment location from NETS Database
High Institutional Owners	Takes the value 1 for firms ranked in the top 25th percentile in the number of institutional owners among all covered firms in an analyst's portfolio and 0 otherwise (from Thomson-Reuters 13F Database)
Relative Importance	Takes the value 1 for firms ranked among the top 25th percentile of market cap in an analyst's portfolio

References

- Addoum, J. M., Ng, D. T. and Ortiz-Bobea, A. (2023), ‘Temperature shocks and industry earning news’, *Journal of Financial Economics* **150**(1), 1–45.
- Alekseev, G., Giglio, S., Maingi, Q., Selgrad, J. and Stroebel, J. (2021), ‘A quantity-based approach to constructing climate risk hedge portfolios’, *NBER Working Paper* .
- Alok, S., Kumar, N. and Wermers, R. (2020), ‘Do fund managers misestimate climatic disaster risk’, *The Review of Financial Studies* **33**(3), 1146–1183.
- Anagol, S., Balasubramaniam, V. and Ramadorai, T. (2021), ‘Learning from noise: Evidence from india’s ipo lotteries’, *Journal of Financial Economics* **140**(3), 965–986.
- Anderson, A. and Robinson, D. T. (2019), ‘Climate fears and the demand for green investment’, *Swedish House of Finance Research Paper No. 19-14* .
- Ardia, D., Bluteau, K., Boudt, K. and Inghelbrecht, K. (2023), ‘Climate change concerns and the performance of green vs. brown stocks’, *Management Science* **69**(12), 7607–7632.
- Atiase, R. K. (1985), ‘Predisclosure information, firm capitalization, and security price behavior around earnings announcements’, *Journal of Accounting Research* pp. 21–36.
- Bailey, M., Cao, R., Kuchler, T., Stroebel, J. and Wong, A. (2018), ‘Social connectedness: Measurement, determinants, and effects’, *Journal of Economic Perspectives* **32**(3), 259–80.
- Baker, A. C., Larcker, D. F. and Wang, C. C. (2022), ‘How much should we trust staggered difference-in-differences estimates?’, *Journal of Financial Economics* **144**(2), 370–395.
- Baker, S. R., McElroy, T. S. and Sheng, X. S. (2020), ‘Expectation formation following large, unexpected shocks’, *Review of Economics and Statistics* **102**(2), 287–303.
- Barrot, J.-N. and Sauvagnat, J. (2016), ‘Input specificity and the propagation of idiosyncratic shocks in production networks’, *The Quarterly Journal of Economics* **131**(3), 1543–1592.

- Bauer, R., Gödker, K., Smeets, P. and Zimmermann, F. (2024), ‘Mental models in financial markets: How do experts reason about the pricing of climate risk?’, *European Corporate Governance Institute–Finance Working Paper* (986).
- Beaver, W. H., Clarke, R. and Wright, W. F. (1979), ‘The association between unsystematic security returns and the magnitude of earnings forecast errors’, *Journal of Accounting Research* pp. 316–340.
- Bernile, G., Bhagwat, V. and Rau, P. R. (2017), ‘What doesn’t kill you will only make you more risk-loving: Early-life disasters and ceo behavior’, *The Journal of Finance* **72**(1), 167–206.
- Bourveau, T. and Law, K. K. (2021), ‘Do disruptive life events affect how analysts assess risk? evidence from deadly hurricanes’, *The Accounting Review* **96**(3), 121–140.
- Ceccarelli, M. and Ramelli, S. (2024), ‘Climate transition beliefs’, *Swiss Finance Institute Research Paper* (24-22).
- Chan, J. Y.-F. (2022), ‘Climate change information and analyst expectations’.
- Choi, D., Gao, Z. and Jiang, W. (2020), ‘Attention to global warming’, *The Review of Financial Studies* **33**(3), 1112–1145.
- Cooper, R. A., Day, T. E. and Lewis, C. M. (2001), ‘Following the leader:: a study of individual analysts’ earnings forecasts’, *Journal of Financial Economics* **61**(3), 383–416.
- Cuculiza, C., Antoniou, C., Kumar, A. and Maligkris, A. (2021), ‘Terrorist attacks, analyst sentiment, and earnings forecasts’, *Management Science* **67**(4), 2579–2608.
- Cuculiza, C., Kumar, A., Xin, W. and Zhang, C. (2021), ‘Climate change, analyst forecasts, and market behavior’, *Available at SSRN 3781157* .
- Cuculiza, C., Kumar, A., Xin, W. and Zhang, C. (2023), ‘Temperature sensitivity, mispricing, and predictable returns’, *Available at SSRN 3331872* .
- Custodio, C., Ferreira, M. A., Garcia-Appendini, E. and Lam, A. (2021), ‘Economic impact of climate change’, *Available at SSRN 4205144* .

- Dehaan, E., Madsen, J. and Piotroski, J. D. (2017), ‘Do weather-induced moods affect the processing of earnings news?’, *Journal of Accounting Research* **55**(3), 509–550.
- Derrien, F., Krüger, P., Landier, A. and Yao, T. (2021), ‘Esg news, future cash flows, and firm value’, *The Journal of Finance*, *conditionally accepted* .
- Deryugina, T. (2013), ‘How do people update? the effects of local weather fluctuations on beliefs about global warming’, *Climatic Change* **118**(2), 397–416.
- Dessaint, O. and Matray, A. (2017), ‘Do managers overreact to salient risks? evidence from hurricane strikes’, *Journal of Financial Economics* **126**(1), 97–121.
- Décaire, P. H. D. and Graham, J. R. (2024), ‘Valuation fundamentals’, *NBER SI 2024 Corporate Finance* .
- Engle, R. F., Giglio, S., Kelly, B., Lee, H. and Stroebel, J. (2020), ‘Hedging climate change news’, *The Review of Financial Studies* **33**(3), 1184–1216.
- Fama, E. F. and MacBeth, J. D. (1973), ‘Risk, return, and equilibrium: Empirical tests’, *Journal of Political Economy* **81**(3), 607–636.
- Gao, M., Leung, H. and Qiu, B. (2021), ‘Organization capital and executive performance incentives’, *Journal of Banking & Finance* **123**, 106017.
- Garcia, D. and Norli, Ø. (2012), ‘Geographic dispersion and stock returns’, *Journal of Financial Economics* **106**(3), 547–565.
- Giglio, S., Maggiori, M., Stroebel, J., Tan, Z., Utkus, S. and Xu, X. (2024), ‘Four facts about esg beliefs and investor portfolios’, *Journal of Financial Economics*, *Forthcoming* .
- Glode, V. (2011), ‘Why mutual funds “underperform”’, *Journal of Financial Economics* **99**(3), 546–559.
- Han, Y., Mao, C. X., Tan, H. and Zhang, C. (2024), ‘Climatic disasters and distracted analysts’, *Contemporary Accounting Research* **41**(2), 1120–1150.

- Hoffmann, R., Muttarak, R., Peisker, J. and Stanig, P. (2022), ‘Climate change experiences raise environmental concerns and promote green voting’, *Nature Climate Change* **12**(2), 148–155.
- Hong, H. and Kacperczyk, M. (2010), ‘Competition and bias’, *The Quarterly Journal of Economics* **125**(4), 1683–1725.
- Hong, H., Kubik, J. D. and Solomon, A. (2000), ‘Security analysts’ career concerns and herding of earnings forecasts’, *The Rand Journal of Economics* pp. 121–144.
- Howe, P. D., Mildemberger, M., Marlon, J. R. and Leiserowitz, A. (2015), ‘Geographic variation in opinions on climate change at state and local scales in the usa’, *Nature climate change* **5**(6), 596–603.
- Huang, H. H., Kerstein, J. and Wang, C. (2018), ‘The impact of climate risk on firm performance and financing choices: An international comparison’, *Journal of International Business Studies* **49**(5), 633–656.
- Hugon, A. and Law, K. (2019), ‘Impact of climate change on firm earnings: evidence from temperature anomalies’, *Available at SSRN 3271386* .
- Huynh, T. D. and Xia, Y. (2023), ‘Panic selling when disaster strikes: Evidence in the bond and stock markets’, *Management Science* **69**(12), 7448–7467.
- Israelsen, R. D. and Kong, J. (2024), ‘Hazy outlook: Wildfire smoke exposure and analysts’, *Available at SSRN 4702170* .
- Jiang, D., Kumar, A. and Law, K. K. (2016), ‘Political contributions and analyst behavior’, *Review of Accounting Studies* **21**, 37–88.
- Kacperczyk, M., Van Nieuwerburgh, S. and Veldkamp, L. (2016), ‘A rational theory of mutual funds’ attention allocation’, *Econometrica* **84**(2), 571–626.
- Kahneman, D. and Tversky, A. (1972), ‘Subjective probability: A judgment of representativeness’, *Cognitive Psychology* **3**(3), 430–454.
- Kim, I., Lee, S. and Ryou, J. (2024), ‘Does climate risk influence analyst forecast accuracy?’, *Journal of Financial Stability* p. 101345.

- Krueger, P., Sautner, Z. and Starks, L. T. (2020), ‘The importance of climate risks for institutional investors’, *The Review of Financial Studies* **33**(3), 1067–1111.
- Krueger, P., Sautner, Z., Tang, D. Y. and Zhong, R. (2021), ‘The effects of mandatory esg disclosure around the world’, *Journal of Accounting Research*, *Forthcoming* .
- Liu, N., Chen, W., Wang, J. and Shi, H. (2022), ‘Typhoon strikes, distracted analyst and forecast accuracy: Evidence from china’, *Finance Research Letters* p. 103359.
- Loh, R. K. and Stulz, R. M. (2011), ‘When are analyst recommendation changes influential?’, *The Review of Financial Studies* **24**(2), 593–627.
- Loh, R. K. and Stulz, R. M. (2018), ‘Is sell-side research more valuable in bad times?’, *The Journal of Finance* **73**(3), 959–1013.
- Malloy, C. J. (2005), ‘The geography of equity analysis’, *The Journal of Finance* **60**(2), 719–755.
- Malmendier, U. and Nagel, S. (2011), ‘Depression babies: Do macroeconomic experiences affect risk taking?’, *The Quarterly Journal of Economics* **126**(1), 373–416.
- Malmendier, U. and Nagel, S. (2016), ‘Learning from inflation experiences’, *The Quarterly Journal of Economics* **131**(1), 53–87.
- Malmendier, U. and Shanthikumar, D. (2014), ‘Do security analysts speak in two tongues?’, *The Review of Financial Studies* **27**(5), 1287–1322.
- Malmendier, U. and Wachter, J. A. (2021), ‘Memory of past experiences and economic decisions’, *Available at SSRN 4013583* .
- Michaely, R. and Womack, K. L. (1999), ‘Conflict of interest and the credibility of underwriter analyst recommendations’, *The Review of Financial Studies* **12**(4), 653–686.
- Michaely, R. and Womack, K. L. (2005), ‘Market efficiency and biases in brokerage recommendations’, *Advances in Behavioral Finance II* **11**, 389–422.
- Nimark, K. P. (2014), ‘Man-bites-dog business cycles’, *American Economic Review* **104**(8), 2320–2367.

- NOAA (2016), ‘Storm prediction center wcm page’, Website.
URL: <https://www.spc.noaa.gov/wcm/data>
- NOAA (2023), ‘U.s. billion-dollar weather and climate disasters’, Website.
URL: <https://www.ncei.noaa.gov/access/monitoring/billions/>
- Opendatasoft (2021), ‘Us zip code latitude and longitude’, Website.
URL: <https://public.opendatasoft.com/explore/dataset/georef-united-states-of-america-zc-point/information/>
- Ou, R. and Wang, Q. (2024), ‘Are analysts’ forecasts reliable? a machine learning-based analysis of the target price accuracy’, *Journal of Behavioral Finance* pp. 1–17.
- Pankratz, N., Bauer, R. and Derwall, J. (2023), ‘Climate change, firm performance, and investor surprises’, *Management Science* **69**(12), 7352–7398.
- Pankratz, N. M. and Schiller, C. M. (2024), ‘Climate change and adaptation in global supply-chain networks’, *The Review of Financial Studies* **37**(6), 1729–1777.
- Park, R. J., Pankratz, N. and Behrer, A. P. (2021), ‘Temperature, workplace safety, and labor market inequality’, *IZA Discussion Paper* .
- Reggiani, P. (2022), ‘Climate change expectations: Evidence from earnings forecasts’.
- Sautner, Z., van Lent, L., Vilkov, G. and Zhang, R. (2023), ‘Firm-level climate change exposure’, *The Journal of Finance* .
- Stotz, O. and von Nitzsch, R. (2005), ‘The perception of control and the level of overconfidence: Evidence from analyst earnings estimates and price targets’, *The Journal of Behavioral Finance* **6**(3), 121–128.
- Stroebel, J. and Wurgler, J. (2021), ‘What do you think about climate finance?’, *Journal of Financial Economics* **142**(2), 487–498.
- Taylor, S. E. and Thompson, S. C. (1982), ‘Stalking the elusive “vividness” effect.’, *Psychological Review* **89**(2), 155.

- Wang, X., Li, Y. and Xiao, M. (2017), ‘Do risk disclosures in annual reports improve analyst forecast accuracy?’, *China Journal of Accounting Studies* **5**(4), 527–546.
- Wirtz, A., Kron, W., Löw, P. and Steuer, M. (2014), ‘The need for data: natural disasters and the challenges of database management’, *Natural Hazards* **70**(1), 135–157.
- Wu, K., Zhang, H., Wang, S., Qiu, Y. and Seasholes, M. S. (2021), ‘How do natural disasters impede corporate earnings management?’, *Available at SSRN 3676848* .
- Wu, R. (2023), ‘Sports mood index and sell-side analysts’, *The Quarterly Review of Economics and Finance* **92**, 35–48.
- Zhang, L. (n.d.), ‘Operating exposure to weather, earnings predictability, and analyst forecast’, *Available at SSRN 4030938* .

Online Appendix

A Descriptive Statistics

Figure [A1](#) maps the location of my total sample of analysts throughout the U.S. (not filtered by control and treated). Not surprisingly, 70% of equity analysts are located in the state of New York, followed by 8% in California and 4% in Illinois.

Figure [A2](#) maps the selected salient weather shocks that occurred near an analyst's office location from 2000 to 2020 by the U.S. state. The states with the highest number of shocks are California and Oregon with 46 and 47 shocks. The state with the lowest number of weather events is Washington with three weather shocks.

B Analysts' Characteristics

To study analysts' beliefs, I collected and constructed a series of analysts' characteristics:

1. **Living in climate-sensitive states:** Climate-sensitive states are constructed using the entire natural hazard dataset and looking at the median number of shocks per state and by setting high climate-sensitive states as states with more than 4 natural events. These states are Texas, Tennessee, Connecticut, Florida, Ohio, California, Pennsylvania, Maryland, and New York.
2. **Experience:** Analysts' experience is quantified by the number of years an analyst has been included in the IBES dataset. Looking at the entire IBES dataset, I define analysts in the top decile as highly experienced analysts (i.e., with more than 13 years).
3. **Lead:** Another approach to categorizing skilled analysts is based on the timeliness of their forecasts. Following the methodology of [Cooper et al. \(2001\)](#), I construct the Leader-Follower Ratio (LFR), defined as the cumulative days of preceding forecasts divided by the cumulative days of following forecasts, excluding the analyst's own forecasts. Note that I only use the last two and the first two forecasts surrounding each analyst's forecast. Analysts with an LFR score above one and who are in the top decile for a given year are classified as lead analysts.

This metric can be calculated at both the firm and sector levels, although [Cooper et al. \(2001\)](#) argue that the sector level is more representative of the industry.

4. **Performance:** The performance measurement follows [Hong et al. \(2000\)](#). Firstly, the forecast error is computed for each analyst by taking the absolute difference between their forecasted values and the actual values. Subsequently, analysts are ranked within their respective firms based on the forecast error, and this ranking is adjusted according to the number of analysts associated with each firm. The resulting rankings yield individual performance scores for analysts within a given year. To determine an analyst’s overall performance score, the average score from the past three years is used. Analysts who fall into the top tercile of performance scores from the previous year are identified as the ‘top-performing’ analysts. At the sector level, an analyst’s performance score is ranked within their sector each year, with top performers similarly defined as those in the top tercile.
5. **Gender:** I determine the gender of equity analysts using Chat GPT, which categorizes analysts’ names as female, male, or uncertain. This categorization results in 14% of the total analyst sample being identified as female, while 5% remain uncertain.
6. **Mindset:** Analysts are defined as pessimistic if their forecast is below the consensus forecast, where the consensus is calculated as the average forecast for a specific firm within a month for a given forecast horizon. I then compute each analyst’s average pessimism score for the fiscal year and categorize analysts into terciles based on these scores. Analysts in the top tercile of pessimism scores from the previous year are designated as ex-ante pessimistic, while all others are considered non-pessimistic. The same approach is applied for optimism, with analysts in the top tercile of optimism scores classified as ex-ante optimistic.
7. **Political variables:** I proxy for political affiliation using Political Donation Data from the FEC dataset , which reports any individual donation above 200 dollars for a party. The merge is conducted by analysts’ names and states. Moreover, I manually checked that the reported companies match the brokerage firm with which the analyst is working. Using the data from 2000 to 2018, I find 203 analysts of which 51% conducted democratic donations.⁴²

⁴²Note that in [Jiang et al. \(2016\)](#), they have a larger sample of 673 donor analysts, during the 1993 to 2008 period.

Additional Results. Table [A17](#) offers a breakdown of the baseline results by analyst characteristics. The findings reveal that male and Democratic analysts exhibit the most significant improvements in forecast accuracy, without a noticeable change in forecast bias. Reassuringly, the effect seems to be driven by analysts who were more pessimistic on average in the previous year and are now becoming even more pessimistic and accurate. This indicates that the observed effect is not merely due to a general decrease in optimism among previously optimistic analysts.

C Climate News

I explore whether the news about climate change increases after an extreme event. This is important because changes in analysts' beliefs should be driven by first-hand experience shocks and not other types of occurring events, such as an increase in climate news. Ideally, I would like to examine variations in climate-related news at both the local and national levels. However, due to data limitations, the currently available indexes are only constructed at the national level. This implies that I can only utilize variations over time and not across states; hence, I cannot include state-fixed effects.

Two climate news indexes are used as dependent variables in table [A18](#). Columns 1-2 use the Sentometric index on news about global warming constructed by [Ardia et al. \(2023\)](#), while columns 3-4 use the Wall Street Journal (WSJ) climate news indices created by [Engle et al. \(2020\)](#). The results in table [A18](#) are not statistically significant. These findings highlight that selected extreme events affect climate change beliefs, but not national climate news.

D Firms' Climate Risks

Defining firms' climate risk is challenging. One way to leverage the data is to categorize firms by high and low-risk sectors. However, this approach is also not trivial. First, because we lose firms' heterogeneity within the sector. Second, most climate risk assessments focus on transition risks and often fail to capture physical risks. In the main analysis, I use the IPCC definition of risky sectors, as outlined by [Choi et al. \(2020\)](#), which primarily relates to transition risks.

Table [A19](#) column 1-4 categorizes firms into high and low climate risk sectors based on criteria from [Addoum et al. \(2023\)](#), which emphasize the direct impact of high temperatures (physical risks)

on companies. Columns 5-8 present a mixed definition that incorporates both transition (as in [Choi et al., 2020](#)) and physical risks (as in [Addoum et al., 2023](#)). The results corroborate that analysts become more accurate for low-risk sectors, but this effect is somewhat mitigated compared to the IPCC definition.

For firm-specific classification, I use Trucost estimates to categorize firms based on high and low climate physical and transition risks. For overall physical risks, I use Trucost’s physical risk composite score, while for transition risks, I consider actual emissions and carbon earnings at risk. High physical risks are defined as above-median composite physical risk scores, given the smaller variation, while high transition risks are represented by firms in the top tercile of carbon earnings at risk.

Table [A20](#) presents results broken down by firms with above-median and below-median physical risks. Consistent with sector-level findings, it shows that the increase in inaccuracy is more pronounced for firms with low physical risks. This isn’t surprising, as physical risks span various hazards, and analysts (at least for heatwaves) tend to be more accurate when dealing with familiar risks.

For transition risks, I use two variables: carbon earnings at risk (a forward-looking measure) and actual emissions (a backward-looking measure). Table [A8](#) shows that analysts become more pessimistic overall, with a marked increase in forecast accuracy for high transition risk firms, while becoming more optimistic—but less accurate—for low transition risk firms. The results for actual emissions in Table [A6](#) are similar, but in this case, increased optimism for low transition risk firms (bottom tercile) also translates into worse forecast errors.

E Firms’ Business Location

Since my main analysis relies on firms’ headquarters as their location, in this analysis, I examine whether companies mention a state as their business location in their 10-K filings from [Garcia and Norli \(2012\)](#).⁴³ This allows me to control for firms with extensive geographic dispersion, which may present challenges for analysts in accurately estimating climate risks. Additionally, it enables me to exclude firms with business locations in the treated states, thus allowing for a more precise analysis.

Table [A21](#) presents the results for firms divided into two categories. Columns 1-2 include firms

⁴³I thank Mandeep Singh for sharing the updated version of the geographical dispersion data up to 2018.

with at least one business location mentioned in their 10-K filings in the same state as the weather shock onset, while columns 3-4 consist of firms with business locations in other states. The results indicate that the effects are driven by firms with at least one business location in the same state as the shock onset. This may indicate that analysts are able to gather some information from the event about the firms' business operations (even if there is no direct impact on the overall business).

F Additional Analysis

Analysts' target price and recommendation. This analysis uses the target price IBES dataset. Following [Ou and Wang \(2024\)](#), I exclude observations where the target price to current price ratio is below 0.7, above 4, or equal to 1. I then construct the absolute target price forecast error as the deviation of the "realized" price (the stock price 12 months after the target price announcement) from the target price in absolute terms. More formally, this is the logarithm of the stock price 12 months ahead divided by the current stock price minus the logarithm of the target stock price 12 months ahead forecasted by an analyst divided by the current stock price.

For analysts' recommendations, I follow [Loh and Stulz \(2011\)](#) and include only those outstanding ratings where the difference between the revision date and the announcement is no more than 12 months. Additionally, I include only companies that received at least one recommendation in a year from a minimum of three analysts. I also reverse the coding so that 5 = strong buy, 4 = buy, 3 = hold, 2 = sell, and 1 = strong sell, meaning a higher recommendation is better. To address the changes in rating distribution caused by the National Association of Securities Dealers (NASD) Rule 2711 implemented in 2002, I only keep recommendations from 2004.

For my analysis, I use the methodology outlined in Section 3. Analysts located within 100 miles of an event are defined as treated, and those farther away are controls that forecast firms in the same sector as the treated analysts. All the firms have to be distant from the event, and analysts forecasting at least one firm near the shock are excluded. I keep the last observation in the months before the event and the first right after (allowing a 3-month window). The sample for target price includes 46 events with 736 analysts near the event and 1,600 control analysts forecasting 2,585 companies. Due to the lower number of recommendations, the sample size is relatively small, comprising 29 events involving 254 treated analysts and 415 control analysts, forecasting 700 firms.

Stock price. To test whether forecast revisions made by analysts near a weather event have a greater impact on stock prices than revisions made by control analysts, I follow [Malloy \(2005\)](#) and run [Fama and MacBeth \(1973\)](#) cross-sectional regressions of average excess return on the magnitude of the revision. Such a finding would provide strong evidence that treated analysts have an information advantage over other analysts. This type of test also helps gauge the economic significance of my prior results.

My main regression is:

$$AAR_{jt} = \alpha_0 + \alpha_1 LNME_{j,-30} + \alpha_2 SUF_{ij0} + \alpha_5 treat_i + \epsilon_{ijt} \quad (3)$$

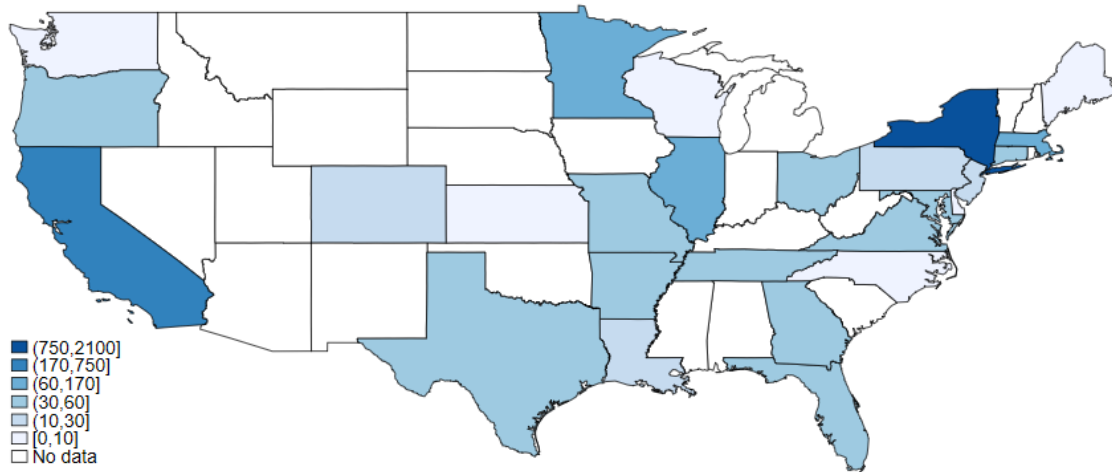
Where AAR is computed following [Beaver et al. \(1979\)](#) and [Atiase \(1985\)](#) by running a rolling regression of stock return on market return from 2 years to 6 months before the event episode for a firm j . I then keep the estimated coefficients from the regressions ($\hat{\alpha}$ and $\hat{\beta}$) constant for the entire post-event period to estimate the unexpected price changes during the period as $u_{jt} = R_{jt} - (\hat{\alpha} + \hat{\beta}R_{mt})$. AAR_{jt} is then defined as the average unexpected price return for the window period of interest (x to \bar{x}) after the forecast revision:

$$AAR_{jt} = \frac{\sum_{t=x}^{+\bar{x}} u_{jt}}{T} \quad (4)$$

In the regression, I also control for the logarithm of the firm's market capitalization in the month before the event. The standardized unexpected forecast equals analyst i 's forecast for firm j on day 0 minus analyst i 's prior forecast for firm j (before the event), scaled by the cross-sectional standard deviation of all prior outstanding forecasts for firm j . As in [Malloy \(2005\)](#), all standard deviations below 0.25\$ are set to 0.25\$ to mitigate small denominators. $treat$ is the dummy variable that takes the value 1 if the analyst is near a salient weather event.

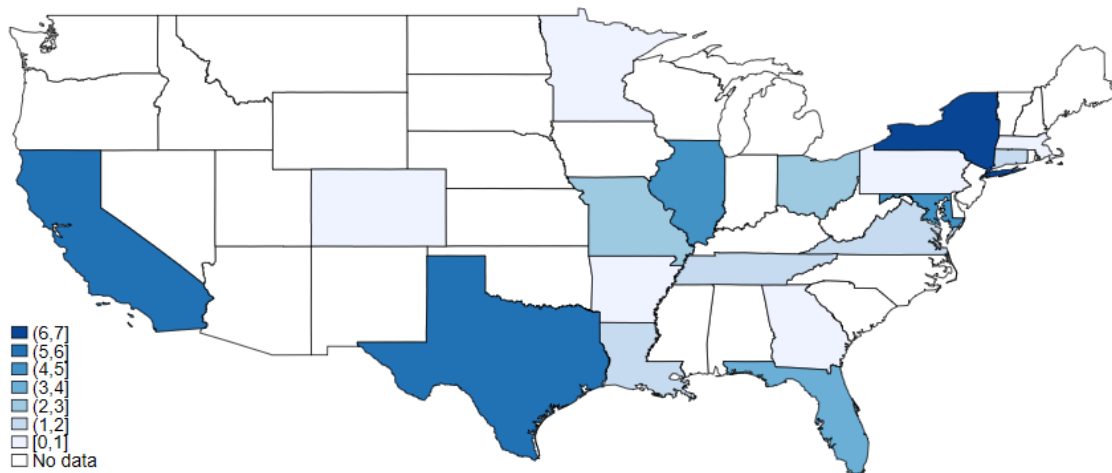
G Appendix Figures

Figure A1: Location of analysts by U.S. state - Full Sample



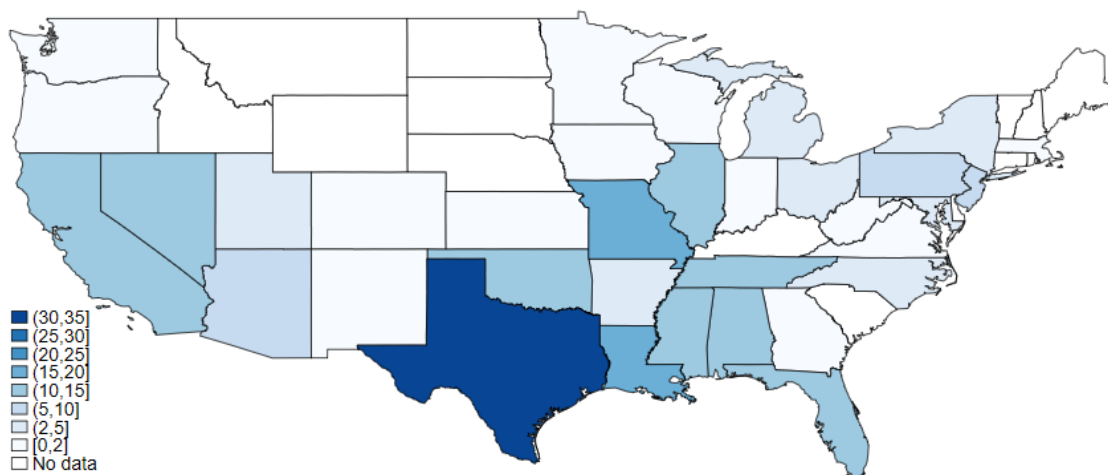
Note: the graph maps the IBES analysts' locations from 2000 to 2020 by U.S. state obtained from Refinitiv and Capital IQ-Professional. Among 2894 analysts, the state of New York has the highest number of analysts with 2017 individuals, followed by California with 235 analysts, 105 analysts in Illinois, and 85 in Minnesota.

Figure A2: Salient weather events near analysts' office location



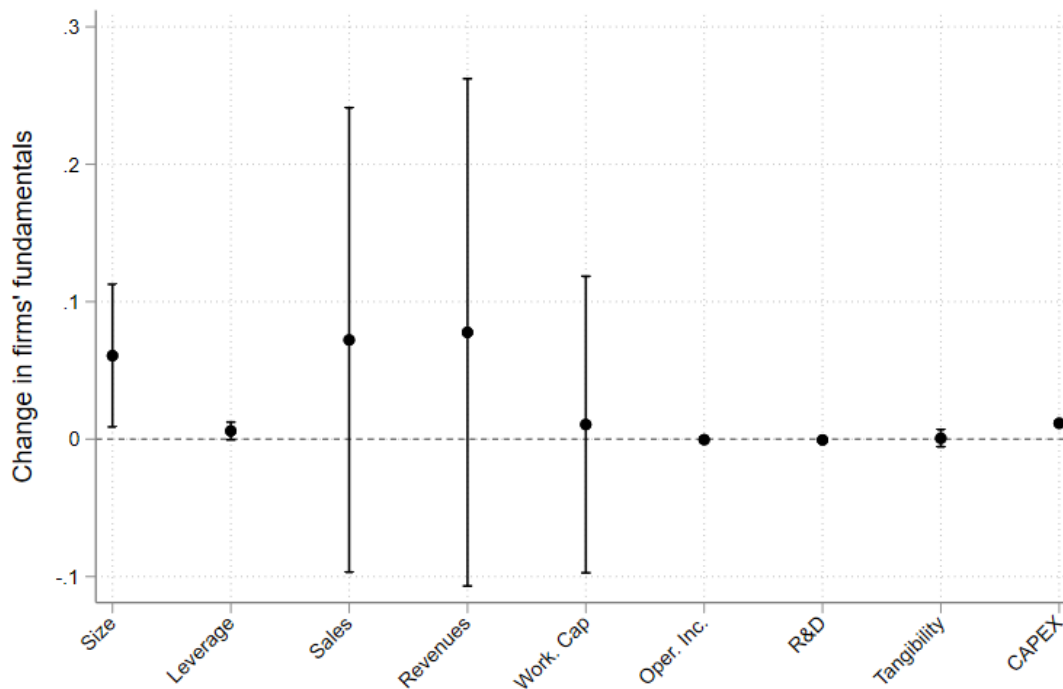
Note: the graph maps the Selected Storm Events from 2000 to 2020 merged to analysts location by U.S. state. Notice that only weather shocks that occur near analysts are reported in the graph. The states with the highest number of shocks are New York, California, and Texas.

Figure A3: All salient weather events by U.S. state



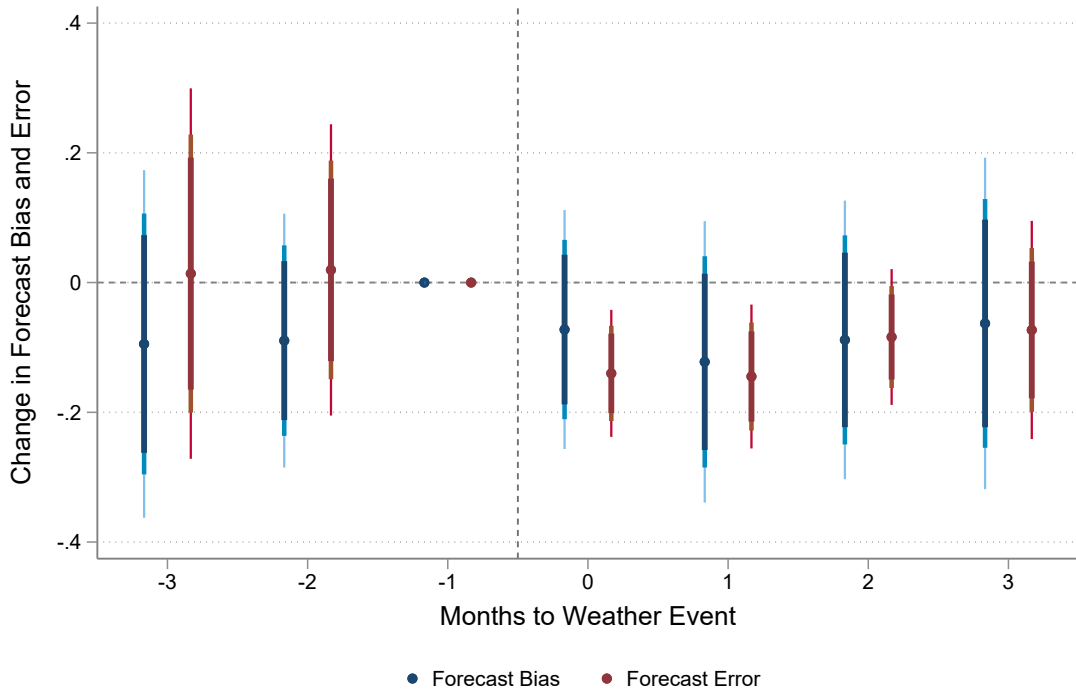
Note: the graph maps the Selected Storm Events from 2000 to 2020 by U.S. state. The state with the highest number of shocks is Texas.

Figure A4: Changes in firms' fundamentals around weather events



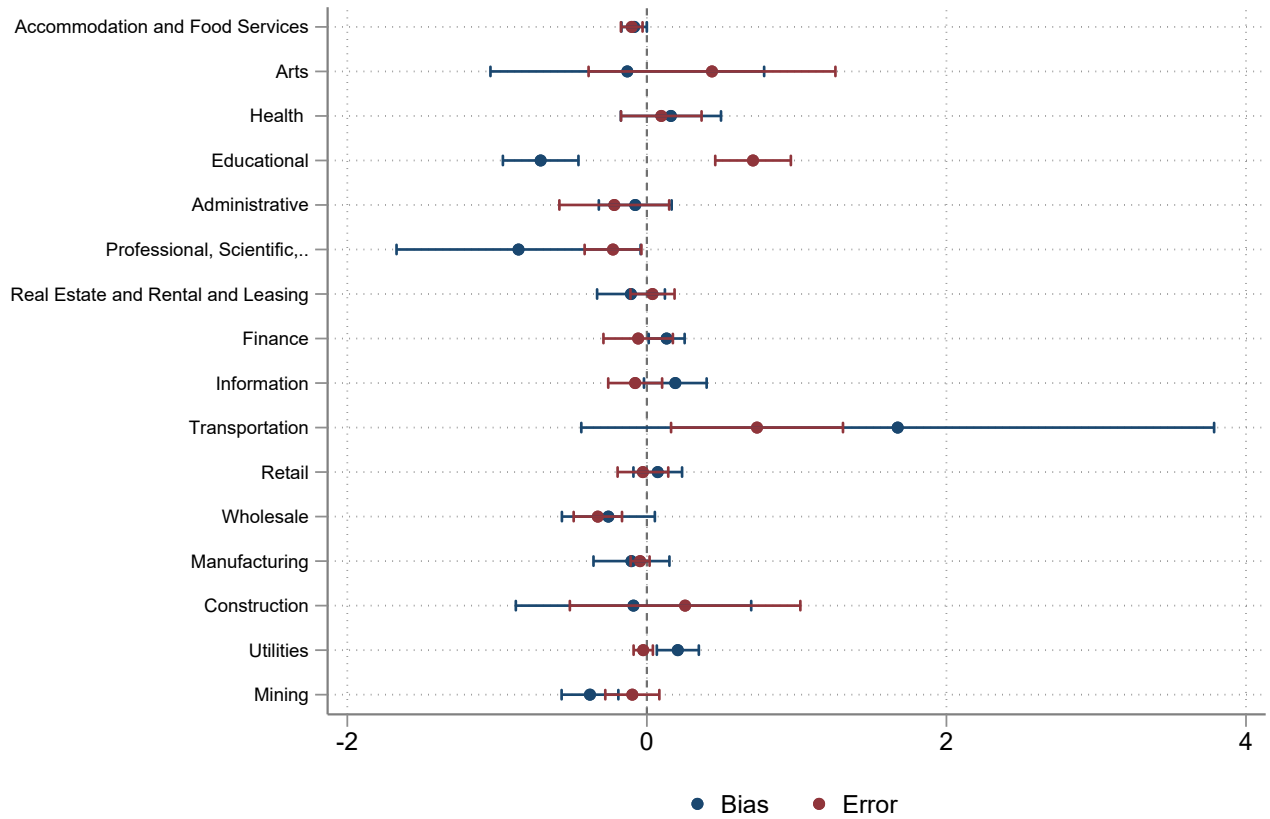
Note: the graph illustrates differences in firms' fundamentals for firms in my sample. The independent variable is an indicator that takes the value of one after the weather event and zero before. Sales, revenue, and working capital are scaled by 1,000 for ease of comparison. I selected the first available data for the forecasted firm one quarter before and one quarter after the weather shock. The table includes fixed effects for the weather event.

Figure A5: Parallel trend



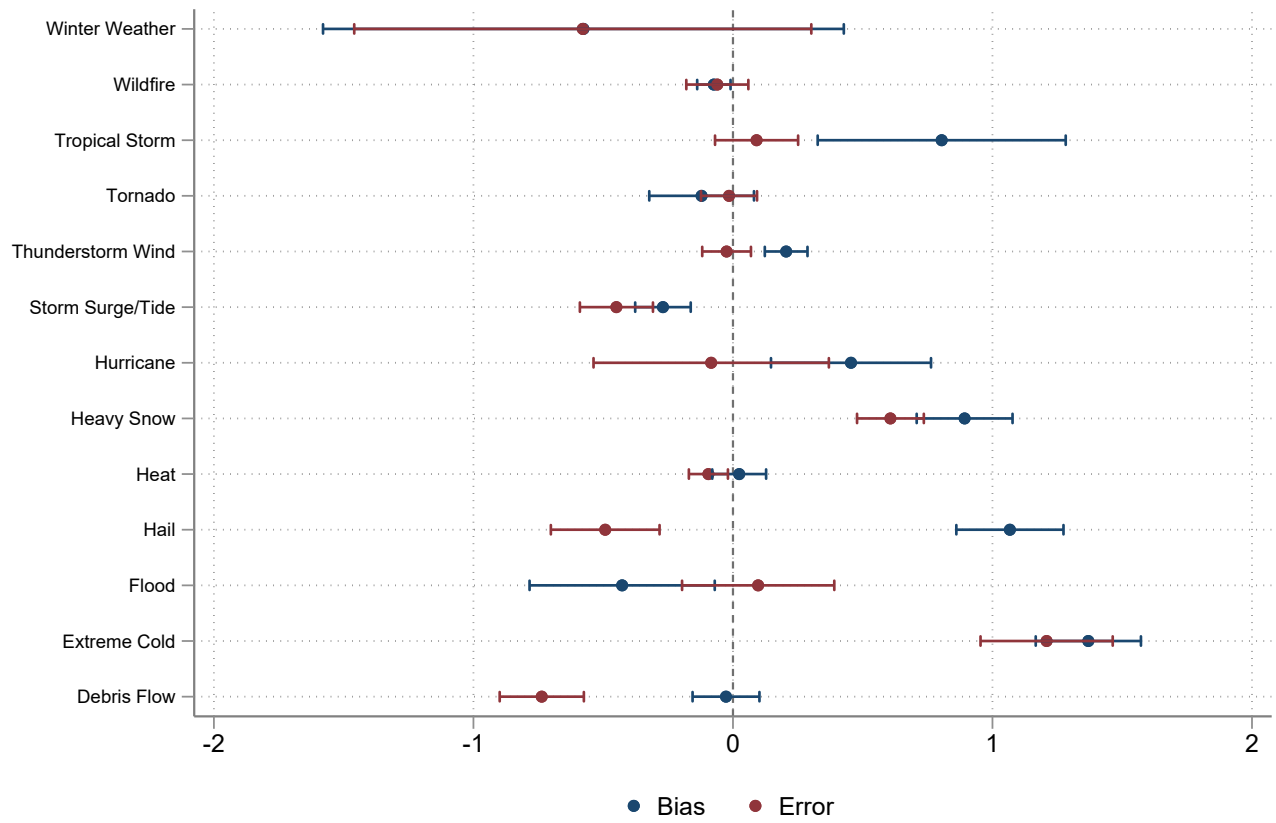
Note: the figure plots the estimated coefficients for the pre- and post-period interactions between treatment (proximity to a weather event) and month indicators for both bias (blue) and error (red), along with 99%, 95%, and 90% confidence intervals. The reference point is the month prior to the weather event. The analysis includes all analysts who issue forecasts in each month leading up to the event. The specification incorporates all covariates, with the shock interacted with horizon-fixed effects. The event window spans from 3 months before to 3 months after the event. Standard errors are clustered by the analysts' office location.

Figure A6: Effect on analysts forecasts by firms sector



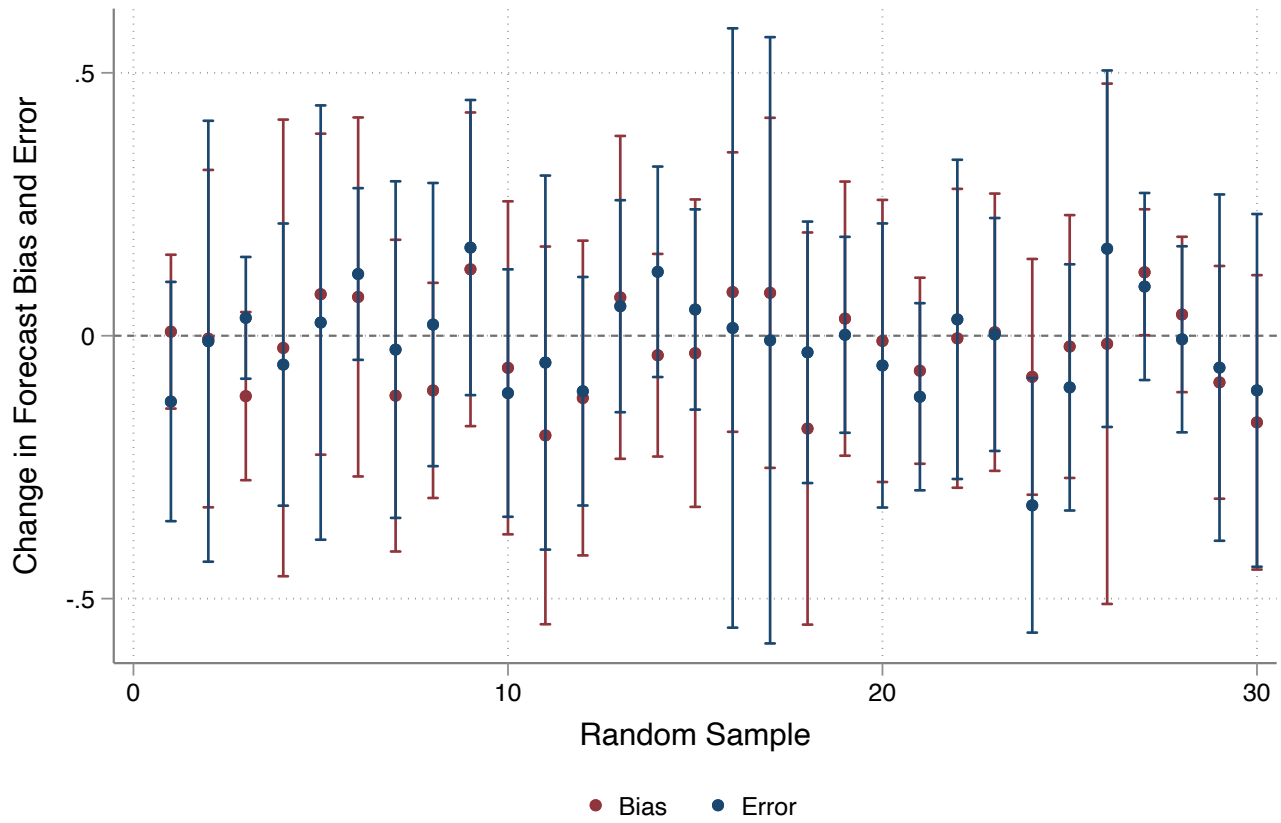
Note: the graph plots the estimated coefficients from the difference-in-differences with 95% confidence intervals for bias (blue) and error (red). The DIDs are run separately for each sector. The specification includes all baseline covariates and includes forecasted horizon*weather shock fixed effect. The analysis keeps only one forecast before and after the event. The standard errors are clustered at the analyst's office location.

Figure A7: Effect on analysts forecasts by type of event



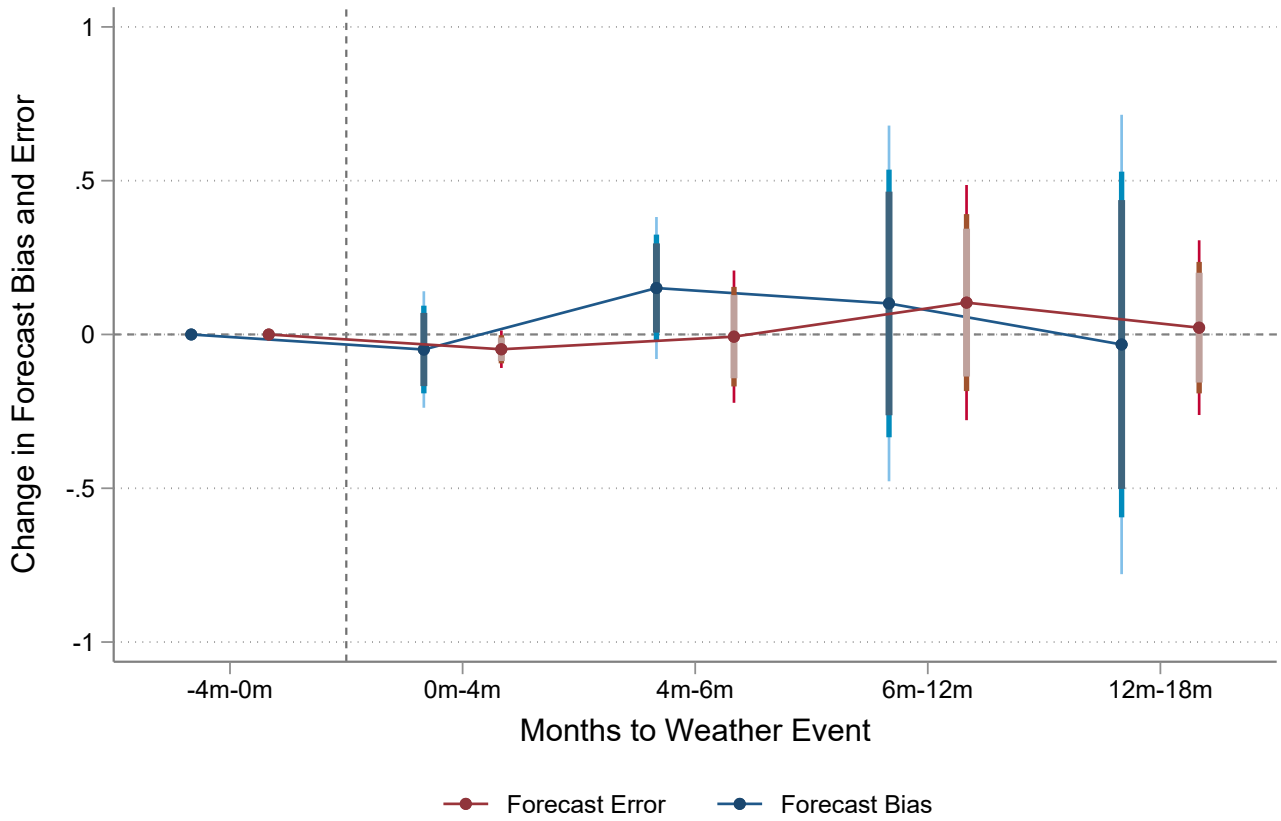
Note: the graph plots the estimated coefficients from the difference-in-differences with 95% confidence intervals for error (black) and bias (red). The DIDs are run separately for each event's type. The specification includes all covariates and forecasted horizon*weather shock fixed effect. The analysis keeps only one forecast before and after the event. The standard errors are clustered at the analyst's office location.

Figure A8: Placebo exercise: randomly generated weather event dates



Note: the figure displays the estimated effect sizes for 30 randomly generated weather event dates, using locations from the actual weather events in the sample. Standard errors are reported at the 5% significance level. The difference-in-differences regression used for these estimates is the baseline regression with controls and fixed effects.

Figure A9: Persistence of the effect after the event (all horizons)



Note: the figure plots the estimated coefficients from the difference-in-differences with 99%, 95% and 90% confidence intervals for error (red) and bias (blue). The specification includes all covariates and forecasted horizon*weather shock fixed effect. The analysis keeps only one forecast before and after the event. The standard errors are clustered at the analyst's office location.

H Appendix Tables

Table A1: Summary statistics for the entire dataset

	Mean	p50	SD	Min	Max
forecast bias (%)	0.81	0.04	4.31	-33.08	66.38
forecast error (%)	2.19	0.78	4.14	0.00	83.20
companies followed	17.47	17.00	7.83	1.00	80.00
firm experience	3.47	2.00	3.60	0.00	21.00
general experience	7.45	7.00	5.12	0.00	21.00
Industries followed	2.12	2.00	1.37	1.00	11.00
brokerage size	85.78	70.00	56.00	1.00	284.00
firm size	8.46	8.41	1.93	-0.86	14.83
leverage	0.25	0.22	0.23	0.00	5.10
market value	1.76	1.08	25.26	0.01	12253.26
stock price	50.79	35.94	67.24	0.32	3808.41
ROA	0.01	0.01	0.19	-166.00	10.69
<i>N</i>	1588202				

Note: the table reports the summary statistics for the whole sample of analysts (before matching with weather shocks). Forecast bias is defined as the difference between the earnings forecast of equity analyst i for firm f in month t minus the actual earnings divided by the stock price for firm f in the previous quarter, while forecast error differs from forecast bias only by having the numerator in absolute terms. Both are expressed in percentages. See tables 20 and 21 for a description of the variables used.

Table A2: Baseline result with FE

	(1)	(2)	(3)	(4)	(5)	(6)
	Bias	Error	Bias	Error	Bias	Error
post	0.00858 (0.0354)	-0.0350** (0.0155)	-0.0514* (0.0292)	-0.124*** (0.0293)	-0.0525* (0.0277)	-0.122*** (0.0276)
treat	-0.377 (0.243)	-0.126 (0.140)	-0.0866 (0.0984)	-0.0134 (0.0504)	0.258* (0.148)	-0.373*** (0.113)
treat*post	-0.0587 (0.0706)	-0.0721** (0.0293)	-0.0429 (0.0664)	-0.0176 (0.0413)	-0.0432 (0.0585)	-0.0181 (0.0418)
Controls	Yes	Yes	Yes	Yes	Yes	Yes
Shock*Horizon FE	Yes	Yes	Yes	Yes	Yes	Yes
Analyst*Firm FE	Yes	Yes	No	No	No	No
Year*Firm FE	No	No	Yes	Yes	No	No
Year*State FE	No	No	No	No	Yes	Yes
R ²	0.585	0.653	0.669	0.718	0.283	0.329
N	57576	57576	57274	57274	57573	57573

Note: the table shows the baseline difference-in-differences for 1 to 5 years EPS forecasts. The weather shock indicator and the horizon fixed effect are incorporated to account for shock and horizon-specific characteristics. The table also includes analyst*firm fixed effects, year interacted with firm ID fixed effects, and year interacted with state ID fixed effects. The controls used are forecast days gap, broker size, companies followed, firms experience, industries followed, and firm size. The dependent variables are multiplied by 100 for interpretability purposes. The standard errors are clustered at the office location.

Table A3: Baseline result for 1-year horizon with FE

	(1)	(2)	(3)	(4)	(5)	(6)
	Bias	Error	Bias	Error	Bias	Error
post	0.0155 (0.0250)	-0.0424** (0.0186)	0.000445 (0.0263)	-0.112*** (0.0310)	0.000910 (0.0228)	-0.111*** (0.0273)
treat	-0.225** (0.105)	0.0318 (0.110)	0.0315 (0.0427)	0.0345 (0.0269)	0.289*** (0.0783)	-0.194** (0.0762)
treat*post	-0.0598 (0.0646)	-0.153*** (0.0374)	-0.0621 (0.0683)	-0.106** (0.0508)	-0.0696 (0.0542)	-0.111** (0.0446)
Controls	Yes	Yes	Yes	Yes	Yes	Yes
Shock*horizon FE	Yes	Yes	Yes	Yes	Yes	Yes
Analyst*Firm FE	Yes	Yes	No	No	No	No
Year*Firm FE	No	No	Yes	Yes	No	No
Year*State FE	No	No	No	No	Yes	Yes
R^2	0.694	0.731	0.800	0.827	0.285	0.290
N	30566	30566	29921	29921	30561	30561

Note: the table shows the baseline difference-in-differences for 1 year EPS forecasts. The weather shock indicator and the horizon fixed effect are incorporated to account for shock and horizon-specific characteristics. The table also includes analyst*firm fixed effects, year interacted with firm ID fixed effects, and year interacted with state ID fixed effects. The controls used are forecast days gap, broker size, companies followed, firms experience, industries followed, and firm size. The dependent variables are multiplied by 100 for interpretability purposes. The standard errors are clustered at the office location.

Table A4: Analysts with heatwave exposure and firms' climate risk (all horizons)

Firm	All		High Heatwave Risk		Low Heatwave Risk	
	(1) Bias	(2) Error	(3) Bias	(4) Error	(5) Bias	(6) Error
treat*post	0.0799 (0.0553)	-0.0346 (0.0505)	0.00474 (0.0932)	-0.121 (0.0885)	0.119*** (0.0435)	0.0131 (0.0398)
Controls	Yes	Yes	Yes	Yes	Yes	Yes
Shock*horizon FE	Yes	Yes	Yes	Yes	Yes	Yes
R^2	0.35	0.37	0.25	0.30	0.46	0.47
N	12434	12434	4358	4358	8076	8076

Note: the table presents the baseline difference-in-differences for firms with high and low heatwave risks when an analyst experienced a heatwave for all horizons. Firms with high heatwave risk are those with above-median heatwave risks compared to other firms in the sample. Each specification includes weather shock times horizon fixed effect to account for shock and horizon-specific characteristics. The controls used are forecast days gap, broker size, companies followed, firms experience, industries followed, and firm size. The regression also controls for bias and error from the pre-treatment period. The dependent variables are multiplied by 100 for interpretability purposes. The standard errors are clustered at the office location.

Table A5: Firms' climate physical and transition risk

	All		High Physical Risk				Low Physical Risk			
			High Transition Risk		Low Transition Risk		High Transition Risk		Low Transition Risk	
	(1) Bias	(2) Error	(3) Bias	(4) Error	(5) Bias	(6) Error	(7) Bias	(8) Error	(9) Bias	(10) Error
treat*post	-0.136** (0.0578)	-0.0507 (0.0325)	-0.257*** (0.0520)	-0.129** (0.0529)	0.202*** (0.0544)	0.177* (0.0906)	-0.231 (0.152)	-0.0774** (0.0373)	-0.0805 (0.159)	-0.159 (0.130)
Controls	Yes	Yes	Yes	Yes	Yes	Yes	Yes	Yes	Yes	Yes
Shock*horizon FE	Yes	Yes	Yes	Yes	Yes	Yes	Yes	Yes	Yes	Yes
R^2	0.191	0.221	0.183	0.211	0.239	0.268	0.279	0.293	0.311	0.338
N	29168	29168	13566	13566	6840	6840	6656	6656	2106	2106

Note: the table shows the baseline difference-in-differences for firms in high and low physical and transition risks. The firm's physical risk is a composite score of all the company's physical risk exposure, i.e. wildfire, coldwave, heatwave, hurricane, sea level rise, flood, and water stress (from Trucost Climate Change Physical Risk Data). Firms with more (less) than the median physical risk composite score in the sample (i.e. more than 60 points) are defined as high (low) risk. I use Trucost's Unpriced Carbon Cost adjusted EBITDA to gauge transition risks, which compares a company's current carbon expenses with projected future costs. High-risk firms are those in the top tercile of earnings at risk for 2020 across different scenarios (high, medium, low), while the rest are considered non-risky. The weather shock indicator and the horizon fixed effect are incorporated to account for shock and horizon-specific characteristics. The controls used are forecast days gap, broker size, companies followed, firms experience, industries followed, and firm size. The dependent variables are multiplied by 100 for interpretability purposes. The standard errors are clustered at the office location.

Table A6: Transition risk proxied by carbon emission

Firms' Emissions	All		Top Tercile		Bottom Tercile	
	(1) Bias	(2) Error	(3) Bias	(4) Error	(5) Bias	(6) Error
treat*post	-0.0386 (0.0623)	0.0363 (0.0460)	-0.242*** (0.0800)	-0.0877* (0.0462)	0.233*** (0.0589)	0.194* (0.100)
Controls	Yes	Yes	Yes	Yes	Yes	Yes
Shock*horizon FE	Yes	Yes	Yes	Yes	Yes	Yes
R^2	0.266	0.322	0.295	0.335	0.297	0.375
N	13638	13638	7074	7074	6564	6564

Note: the table shows the baseline difference-in-differences for firms in high and low transition risks. High transition risk firms are defined as those in the top tercile of MSCI absolute scope 1 emissions data, while all others are classified as low risk. The weather shock indicator and the horizon fixed effect are incorporated to account for shock and horizon-specific characteristics. The controls used are forecast days gap, broker size, companies followed, firms experience, industries followed, and firm size. The dependent variables are multiplied by 100 for interpretability purposes. The standard errors are clustered at the office location.

Table A7: Firms by forecast dispersion

	Low Forecast Dispersion		High Forecast Dispersion	
	(1) Bias	(2) Error	(3) Bias	(4) Error
treat*post	0.0402 (0.0580)	-0.0417 (0.0313)	-0.404*** (0.118)	-0.229*** (0.0775)
Controls	Yes	Yes	Yes	Yes
Shock*horizon FE	Yes	Yes	Yes	Yes
R^2	0.361	0.381	0.237	0.266
N	44118	44118	8863	8863

Note: the table presents the baseline difference-in-differences estimates divided using firms' forecast dispersion. First, I calculate dispersion as the standard deviation of all forecasts made for a firm over a given horizon in a month. Then, in each month, I create quartiles of forecast dispersion. For a given firm, I average the quartiles at the monthly level for the year. Forecast dispersion is classified as high dispersion if it falls into the top quartile of dispersion in the previous year for a given forecast horizon; low dispersion includes all the other quartiles. Each specification includes weather shock times horizon fixed effects to account for shock and horizon-specific characteristics. The controls used are forecast days gap, broker size, companies followed, firms' experience, industries followed, and firm size. The dependent variables are multiplied by 100 for interpretability purposes. The standard errors are clustered at the office location.

Table A8: Firms' climate transition risk proxied by earnings at risk

	All		High Transition Risk		Low Transition Risk	
	(1) Bias	(2) Error	(3) Bias	(4) Error	(5) Bias	(6) Error
treat*post	-0.137** (0.0577)	-0.0528 (0.0332)	-0.247*** (0.0574)	-0.114*** (0.0344)	0.127** (0.0619)	0.0926 (0.0719)
Controls	Yes	Yes	Yes	Yes	Yes	Yes
Shock*horizon FE	Yes	Yes	Yes	Yes	Yes	Yes
R ²	0.192	0.222	0.202	0.218	0.234	0.266
N	29586	29586	20552	20552	9034	9034

Note: the table shows the baseline difference-in-differences for firms in high and low climate transition risk. I use Trucost's Unpriced Carbon Cost adjusted EBITDA to gauge transition risks, which compares a company's current carbon expenses with projected future costs. High-risk firms are those in the top tercile of earnings at risk for 2020 across different scenarios (high, medium, low), while the rest are considered non-risky. The weather shock indicator and the horizon fixed effect are incorporated to account for shock and horizon-specific characteristics. The controls used are forecast days gap, broker size, companies followed, firms experience, industries followed, and firm size. The dependent variables are multiplied by 100 for interpretability purposes. The standard errors are clustered at the office location.

Table A9: Lead and follower analysts

	Firm Lead-Follower				Sector Lead-Follower			
	Lead		Follower		Lead		Follower	
	(1) Bias	(2) Error	(3) Bias	(4) Error	(5) Bias	(6) Error	(7) Bias	(8) Error
treat*post	0.157* (0.0815)	-0.0667 (0.0877)	-0.0669 (0.0658)	-0.0998*** (0.0309)	-0.0769 (0.112)	-0.239** (0.0832)	-0.0218 (0.0654)	-0.0724** (0.0336)
Controls	Y	Y	Y	Y	Y	Y	Y	Y
Shock*Hor FE	Y	Y	Y	Y	Y	Y	Y	Y
R ²	0.263	0.130	0.298	0.126	0.277	0.160	0.291	0.124
N	8005	8005	33656	33656	4671	4671	36989	36989

Note: the table shows the baseline difference-in-differences for lead-follower analysts constructed at the firm and sector level following [Cooper et al. \(2001\)](#). The weather shock indicator and the horizon fixed effect are incorporated to account for shock and horizon-specific characteristics. The controls used are forecast days gap, broker size, companies followed, firms experience, industries followed, and firm size. The dependent variables are multiplied by 100 for interpretability purposes. The standard errors are clustered at the office location.

Table A10: Analysts' performance

	Firm Performance				Sector Performance			
	High		Low		High		Low	
	(1) Bias	(2) Error	(3) Bias	(4) Error	(5) Bias	(6) Error	(7) Bias	(8) Error
treat*post	0.146** (0.0693)	0.0583 (0.0584)	-0.100 (0.0669)	-0.106** (0.0461)	-0.0673 (0.0541)	-0.113** (0.0439)	0.0380 (0.0959)	-0.0992 (0.0757)
Controls	Y	Y	Y	Y	Y	Y	Y	Y
Shock*Hor FE	Y	Y	Y	Y	Y	Y	Y	Y
R ²	0.340	0.388	0.252	0.296	0.259	0.311	0.280	0.309
N	11503	11503	46073	46073	31259	31259	19059	19059

Note: the table shows the baseline difference-in-differences for high and low performance analysts constructed following [Hong et al. \(2000\)](#). Firm (sector) performance is constructed using the top analysts regarding forecast error for a firm (sector). The weather shock indicator and the horizon fixed effect are incorporated to account for shock and horizon-specific characteristics. The controls used are forecast days gap, broker size, companies followed, firms experience, industries followed, and firm size. The dependent variables are multiplied by 100 for interpretability purposes. The standard errors are clustered at the office location.

Table A11: Geographical distance of analysts from the companies

Company's location	Near Analyst		Distant from Analyst	
	(1)	(2)	(3)	(4)
	Bias	Error	Bias	Error
treat*post	-0.0682 (0.0638)	-0.117*** (0.0420)	-0.0334 (0.0765)	-0.0237 (0.0509)
Controls	Yes	Yes	Yes	Yes
Shock*horizon FE	Yes	Yes	Yes	Yes
R ²	0.261	0.293	0.278	0.338
N	28823	28823	28753	28753

Note: the table shows the baseline difference-in-differences results, broken down by the geographical distance between firms and analysts. *Companies Near Analysts* are within 752 miles of the analysts, which is the median distance, while *Companies Distant from Analysts* are farther than the median. The results remain consistent when breaking down the distance by quartiles, comparing the 1st-2nd quartiles to the 3rd-4th quartiles. The weather shock indicator and horizon fixed effects are included to account for shock and horizon-specific characteristics. The controls used are forecast days gap, broker size, number of companies followed, firm experience, industries followed, and firm size. The dependent variables are multiplied by 100 for interpretability. Standard errors are clustered at the office location.

Table A12: Analysts' target price forecast error

	Target Price Forecast Error				
	(1)	(2)	(3)	(4)	(5)
post	-0.0135*** (0.00272)	-0.0134*** (0.00271)	-0.0134*** (0.00283)	-0.0134*** (0.00283)	-0.0133*** (0.00268)
treat	0.00118 (0.0122)	0.0101 (0.0116)	0.0203* (0.0112)	0.0192** (0.00733)	0.00921 (0.0123)
post*treat	-0.0246*** (0.00514)	-0.0246*** (0.00512)	-0.0246*** (0.00530)	-0.0249*** (0.00530)	-0.0247*** (0.00511)
Controls	No	Yes	Yes	Yes	Yes
Shock FE	Yes	Yes	Yes	Yes	Yes
Analyst FE	No	No	Yes	No	No
Firm FE	No	No	No	Yes	No
Brokerage FE	No	No	No	No	Yes
R^2	0.195	0.214	0.381	0.564	0.235
N	46858	46846	46846	46846	46845

Note: the table reports the baseline difference-in-differences using analysts' target price forecast error as the dependent variable. The dependent variable is constructed as the logarithmic return of stock i (the price in 12 months divided by the price today) minus the logarithmic implied return of stock i (the target price of stock issued by the analyst with a 12-month forecast horizon divided by the current price of the stock), all in absolute terms. The last columns also include a triple interaction for firms in high climate sectors, high physical risk, and high transition risks. Each specification includes weather shock indicator fixed effects (FE). I also include analyst FE, firm FE, and brokerage FE. The controls used are broker size, companies followed, firm experience, industries followed, and firm size. The standard errors are clustered at the office location.

Table A13: Analysts' recommendation

	Analyst Recommendation				
	(1)	(2)	(3)	(4)	(5)
post	-0.0896 (0.0645)	-0.0895 (0.0645)	-0.0925 (0.0693)	-0.0903 (0.0732)	-0.0942 (0.0677)
treat	0.0654 (0.0736)	0.0926 (0.0725)	-0.0183 (0.0897)	0.131** (0.0564)	0.105 (0.0665)
post*treat	-0.0419 (0.0623)	-0.0424 (0.0626)	-0.0322 (0.0668)	-0.0401 (0.0713)	-0.0342 (0.0626)
Controls	No	Yes	Yes	Yes	Yes
Shock FE	Yes	Yes	Yes	Yes	Yes
Analyst FE	No	No	Yes	No	No
Firm FE	No	No	No	Yes	No
Brokerage FE	No	No	No	No	Yes
R ²	0.03	0.03	0.34	0.40	0.11
N	2728	2728	2728	2728	2727

Note: the table reports the baseline difference-in-differences using analysts' recommendation as the dependent variable. A higher recommendation is better, with 5 = strong buy, 4 = buy, 3 = hold, 2 = sell, and 1 = strong sell. Each specification includes weather shock indicator fixed effects (FE). I also include analyst FE, firm FE, and brokerage FE. The controls used are broker size, companies followed, firm experience, industries followed, and firm size. The standard errors are clustered at the office location.

Table A14: Distant analysts forecasting a company while skilled analysts are near the events

Panel A	Treated Experienced Analyst			
	(1) Consensus	(2) Dispersion	(3) Bias	(4) Error
1(analyst near)*post	-0.295 (0.214)	-0.0138 (0.0402)	-0.140 (0.125)	0.282*** (0.101)
R^2	0.432	0.290	0.207	0.317
N	10477	10477	10477	10477
Panel B	Treated Top Performance Analyst			
	(1) Consensus	(2) Dispersion	(3) Bias	(4) Error
1(analyst near)*post	0.118 (0.155)	-0.0302** (0.0146)	-0.243** (0.115)	-0.145 (0.119)
R^2	0.437	0.295	0.206	0.317
N	10640	10640	10640	10640
Panel C	Treated Lead Analyst			
	(1) Consensus	(2) Dispersion	(3) Bias	(4) Error
1(analyst near)*post	0.532 (0.361)	0.0148 (0.0180)	-0.319** (0.130)	-0.00883 (0.117)
Controls	Y	Y	Y	Y
Shock*horizon*Sector FE	Y	Y	Y	Y
R^2	0.440	0.290	0.204	0.308
N	10007	10007	10007	10007

Note: the table presents the baseline difference-in-differences for the aggregate effect on consensus, dispersion, bias, and error at the company level for analysts distant from the event. The variable 1 (*analyst near*) is assigned a value of 1 for companies with at least one analyst located near the weather event and 0 otherwise. The dependent variable reflects the average forecast values across all analysts distant from the event for each company. Panel A reports results when a treated analyst is experienced, Panel B focuses on top-performing analysts, and Panel C highlights lead analysts. Treated and control companies are required to be in the same sector, state, shock event, and forecast horizon, and are matched based on coverage, sales, firm size, leverage, operating income, ROA, stock price, and market value. The control variables include company coverage, firm size, leverage, sales, and operating income. The dependent variables are multiplied by 100 for interpretability. Standard errors are clustered at the state level and at the office location.

Table A15: Effect of forecast revision on stock return

	(1) All	(2) Good	(3) Bad	(4) Good & LP	(5) Good & HP	(6) Bad & LP	(7) Bad & HP
AAR [-1,+1]							
treat	-0.0197 (0.0761)	-0.252** (0.124)	0.387*** (0.134)	-0.148 (0.219)	-0.256 (0.238)	0.388 (0.277)	0.227 (0.179)
R^2	0.0565	0.0419	0.0732	0.119	0.0541	0.168	0.0786
N	29517	10035	9625	2056	4640	1647	3912
AAR [2,15]							
treat	-0.0127 (0.0181)	0.0147 (0.0257)	-0.0289 (0.0347)	-0.0567 (0.0437)	0.0537 (0.0342)	-0.059 (0.0741)	0.075 (0.0456)
R^2	0.0267	0.0502	0.037	0.154	0.0906	0.173	0.0752
N	29959	10200	9740	2100	4741	1680	3955
AAR [2,30]							
treat	-0.00344 (0.0123)	0.0284 (0.0183)	-0.0204 (0.0229)	0.00498 (0.0326)	0.0585** (0.0245)	-0.0506 (0.0495)	0.0117 (0.0308)
R^2	0.0352	0.057	0.05	0.121	0.117	0.161	0.102
N	29959	10200	9740	2100	4741	1680	3955
AAR [2,62]							
treat	0.0101 (0.00843)	0.0279** (0.0134)	-0.00854 (0.0149)	-0.00521 (0.023)	0.0410** (0.0168)	-0.0218 (0.031)	-0.0456** (0.0207)
R^2	0.0513	0.0804	0.0659	0.153	0.144	0.156	0.107
N	29959	10200	9740	2100	4741	1680	3955

Note: the table reports the estimated coefficient for the [Malloy \(2005\)](#) regression of forecast revision on stock price. The regression is segmented by analysts' signal—classified as good if the forecast revision is above the previous forecast and consensus, and bad if below. Additionally, the regression is divided by a firm's climate physical risks: high (HP) if above the median, and low (LP) if below the median, as per the composite physical risk measure. The coefficient of interest is the variable *treat* equals 1 if the analyst has experienced at least one significant weather event. The table includes month-year fixed effects. It also includes covariates such as market capitalization and the standardized value of the forecast revision. The standard errors are clustered at the firm level.

Table A16: Socially connected analysts

Social Connectedness Index	High		Low	
	(1) Bias	(2) Error	(3) Bias	(4) Error
treat*post	-0.0944 (0.0679)	-0.103*** (0.0326)	-0.0305 (0.0678)	-0.0439 (0.0384)
Controls	Yes	Yes	Yes	Yes
Shock*horizon FE	Yes	Yes	Yes	Yes
R^2	0.268	0.305	0.302	0.348
N	33992	33992	28512	28512

Note: the table presents the baseline difference-in-differences results for analysts in high and low socially connected counties. The Social Connectedness Index (SCI), obtained from [Bailey et al. \(2018\)](#), represents the relative probability of a Facebook friendship connection between individuals in two locations. For each treated analyst's county, the high connection is defined as being in the top decile of the SCI, while the low connection includes all others. The results are shown for treated analysts with control analysts in socially connected cities (columns 1-2) and those without control analysts in socially connected cities (columns 3-4). The weather shock indicator and horizon fixed effects are included to account for shock and horizon-specific characteristics. The controls used are forecast days gap, broker size, number of companies followed, firm experience, industries followed, and firm size. The dependent variables are multiplied by 100 for interpretability. Standard errors are clustered at the office location.

Table A17: Analysts gender, mindset and political donation

Analyst's gender	Female		Male	
	(1) Bias	(2) Error	(3) Bias	(4) Error
treat*post	0.0590 (0.134)	0.0145 (0.108)	-0.0946 (0.0721)	-0.101*** (0.0324)
R ²	0.290	0.375	0.276	0.317
N	4926	4926	49716	49716
Analyst's mindset	Pessimistic		Optimistic	
	(1) Bias	(2) Error	(3) Bias	(4) Error
treat*post	-0.102* (0.0562)	-0.143*** (0.0410)	-0.0324 (0.0903)	-0.0302 (0.0300)
R ²	0.219	0.255	0.312	0.356
N	21799	21799	35777	35777
Analyst's donation	Democratic		Republican	
	(1) Bias	(2) Error	(3) Bias	(4) Error
treat*post	-0.0477 (0.0848)	-0.510*** (0.0362)	0.207 (0.135)	-0.0182 (0.128)
Controls	Yes	Yes	Yes	Yes
Shock*horizon FE	Yes	Yes	Yes	Yes
R ²	0.333	0.338	0.576	0.642
N	4554	4554	2408	2408

Note: the table presents the baseline difference-in-differences estimates for analysts' gender, mindset, and political donations. Gender is inferred from the analyst's first name and categorized as either female or male. Mindset is determined by calculating the average bias in the previous year and classifying analysts into the top tercile of pessimism (where the top tercile represents the most pessimistic analysts) while all others are categorized as optimistic. Similar results are obtained when defining optimists as only those in the top tercile of optimism. Political donation data is compiled by merging individual donations to political parties from the Federal Election Commission (FEC) database. The weather shock indicator and the horizon fixed effect are incorporated to account for shock and horizon-specific characteristics. The controls used are forecast days gap, broker size, companies followed, firms experience, industries followed, and firm size. The dependent variables are multiplied by 100 for interpretability purposes. The standard errors are clustered at the office location.

Table A18: Climate news after extreme weather events

	Sentometrics			WSJ		
	(1)	(2)	(3)	(4)	(5)	(6)
Fatalities	0.0334 (0.0401)			-0.0185 (0.0421)		
Injuries		-0.00776 (0.0408)			-0.00518 (0.0414)	
1 bil. \$ damages			0.0220 (0.0541)			-0.0348 (0.0556)
Year FE	Yes	Yes	Yes	Yes	Yes	Yes
State FE	No	No	No	No	No	No
R^2	0.382	0.382	0.382	0.309	0.308	0.309
N	4563	4563	4563	4239	4239	4239

Note: the table reports the estimated coefficients from the regression of the Sentometric index on news about global warming ([Ardia et al., 2023](#)) and the Wall Street Journal (WSJ) climate news indices created by [Engle et al. \(2020\)](#). State fixed effects are not included because these indices are constructed at the national level, and unfortunately, I do not have data on local news.

Table A19: Firms' climate-sector risk

Definition	Addoum et al. (2023)				Addoum et al. (2023) and Choi et al. (2020)			
	High		Low		High		Low	
	(1) Bias	(2) Error	(3) Bias	(4) Error	(5) Bias	(6) Error	(7) Bias	(8) Error
treat*post	-0.0822 (0.109)	-0.0625** (0.0294)	-0.0398 (0.0399)	-0.0829* (0.0430)	-0.102 (0.0864)	-0.0607** (0.0249)	0.0305 (0.0239)	-0.0971* (0.0488)
Controls	Yes	Yes	Yes	Yes	Yes	Yes	Yes	Yes
Shock*horizon FE	Yes	Yes	Yes	Yes	Yes	Yes	Yes	Yes
R^2	0.178	0.239	0.461	0.488	0.205	0.264	0.518	0.527
N	36090	36090	21486	21486	41382	41382	16194	16194

Note: the table presents the baseline difference-in-differences estimates for firms with high and low climate sector risks. The first four columns use the Addoum et al. (2023) climate sector classification, which categorizes the following industries as low risk: mining, retail, transport, information, finance, real estate, professional services, administration, education, and arts. High-risk industries include utilities, construction, manufacturing, wholesale, health, and accommodation. The last four columns apply a combined classification from both Choi et al. (2020) and Addoum et al. (2023), where industries are categorized as follows: low-risk sectors include retail, information, finance, real estate, professional services, administration, education, and arts, while high-risk sectors include mining, utilities, construction, manufacturing, wholesale, transport, health, and accommodation. The weather shock indicator and horizon fixed effects are included to account for shock and horizon-specific characteristics. The controls used in the model are forecast days gap, broker size, number of companies followed, analyst experience, number of industries followed, and firm size. The dependent variables are multiplied by 100 for interpretability. Standard errors are clustered at the office location.

Table A20: Firms' climate physical risk

	All		High Physical Risk		Low Physical Risk	
	(1) Bias	(2) Error	(3) Bias	(4) Error	(5) Bias	(6) Error
treat*post	-0.0562 (0.0476)	-0.0337 (0.0507)	-0.0168 (0.0382)	-0.0131 (0.0765)	-0.150 (0.136)	-0.0824** (0.0355)
Controls	Yes	Yes	Yes	Yes	Yes	Yes
Shock*horizon FE	Yes	Yes	Yes	Yes	Yes	Yes
R^2	0.203	0.256	0.190	0.264	0.275	0.287
N	35314	35314	25112	25112	10202	10202

Note: the table shows the baseline difference-in-differences for firms in high and low composite climate physical risk. The firm's physical risk is a composite score of all the company's physical risk exposure, i.e. wildfire, coldwave, heatwave, hurricane, sea level rise, flood, and water stress (from Trucost Climate Change Physical Risk Data). The score takes values from 1 (lowest risk) to 100 (highest risk). Firms with more (less) than the median physical risk composite score in the sample (i.e. more than 60 points) are defined as high (low) risk. The weather shock indicator and the horizon fixed effect are incorporated to account for shock and horizon-specific characteristics. The controls used are forecast days gap, broker size, companies followed, firms experience, industries followed, and firm size. The dependent variables are multiplied by 100 for interpretability purposes. The standard errors are clustered at the office location.

Table A21: Robustness: firms' business location

Firm business location	All		= Shock's State		\neq Shock's State	
	(1) Bias	(2) Error	(3) Bias	(4) Error	(5) Bias	(6) Error
treat*post	-0.0587 (0.0658)	-0.0721** (0.0273)	-0.118 (0.0862)	-0.136*** (0.0342)	-0.0127 (0.0620)	-0.0299 (0.0429)
Controls	Yes	Yes	Yes	Yes	Yes	Yes
Shock*horizon FE	Yes	Yes	Yes	Yes	Yes	Yes
R^2	0.262	0.303	0.362	0.392	0.204	0.255
N	57586	57586	22138	22138	35448	35448

Note: the table shows the baseline difference-in-differences divided using the firm's business location index developed by [Garcia and Norli \(2012\)](#), which counts the number of times a firm mentions having at least one business location in a particular state within a year in their 10-k filing. The results are reported by = *shock's state* focus on firms that mention the same state as the weather shocks, \neq *shock's state* examine firms that do not mention the state as the weather shock. Each specification includes weather shock times horizon fixed effect to account for shock and horizon-specific characteristics. The controls used are forecast days gap, broker size, companies followed, firms experience, industries followed, and firm size. The dependent variables are multiplied by 100 for interpretability purposes. The standard errors are clustered at the office location.

Table A22: Earnings Calls' Dictionary: lists of unigrams and bigrams

List Name	Unigrams/Bigrams
Unigram Physical Risk	hurricane, heat, storm, flood, wildfire, heatwave, tornado, hail, tide
Bigram Physical Risk	global warm, global warming, climate change, natural hazard, warm climate, coastal area, snow ice, sea level, storm water, heavy snow, water scarcity, thunderstorm wind, winter weather, extreme cold, excessive heat, wind chill, winter storm, debris flow, storm surge, flash flood, tropical storm
Bigram Physical Risk (Sautner et al., 2023)	coastal area, global warm, snow ice, friendly product, forest land, area florida, sea level, provide water, nickel metal, storm water, heavy snow, air water, natural hazard, sea water, warm climate, water discharge, ice product, security energy, water act, management district, weather snow, service reliable, management water, ability party, hurricane, flood, wildfire, heatwave, ice control, inland area, non coastal, storm january, sale forest, value forest, land forest, particularly coastal, golf ground, especially coastal, sewer overflow, combine sewer, area coastal, large desalination, plant algeria, warm product, solution act, fluorine product, area inland, fight global, sell forest, exposure coastal, city coastal, marina east, day desalination, snow storm, typhoon, heat

<p>Bigram Opportunity Risk (Sautner et al., 2023)</p>	<p>renewable energy, electric vehicle, clean energy, new energy, wind power, wind energy, solar energy, plug hybrid, heat power, renewable resource, solar farm, battery electric, electric hybrid, reinvestment act, issue rfp, construction megawatt, rooftop solar, grid power, recovery reinvestment, solar generation, energy standard, sustainable energy, vehicle charge, guangdong province, hybrid car, charge infrastructure, micro grid, grid connect, clean efficient, carbon free, hybrid technology, generation renewable, energy wind, battery charge, gas clean, vehicle lot, vehicle place, meet energy, vehicle type, vehicle future, energy commitment, electronic consumer, expand energy, gigawatt install, bus truck, ton waste, energy research, focus renewable, pure electric, ev charge, grid technology, geothermal power, type energy, solar program, vehicle development, energy important, install solar, vehicle battery, energy vehicle, energy bring, vehicle space, opportunity clean, demand wind, vehicle good, medical electronic, incremental content, supply industrial, energy target, term electric, power world, vehicle small, renewable electricity, wave power, carbon neutral, auction new, cost renewable, vehicle talk, vehicle offer, customer clean, power solar, vehicle opportunity, community solar, energy goal, vehicle hybrid, invest renewable, incorporate advance, talk solar, ton carbon, small hydro, base solar, target gigawatt, charge network, capacity generation, vehicle add, vehicle infrastructure, solar array, energy auction, product hybrid, product solar, exist wind</p>
---	--

<p>Bigram Regulatory Risk (Sautner et al., 2023)</p>	<p>greenhouse gas, reduce emission, carbon emission, carbon dioxide, gas emission, air pollution, reduce carbon, energy regulatory, carbon tax, carbon price, environmental standard, nox emission, emission trade, dioxide emission, epa regulation, energy independence, carbon reduction, know clean, standard requirement, development renewable, carbon market, trade scheme, deliver clean, mercury emission, reduce air, save technology, talk clean, energy alternative, place energy, reduce nox, air resource, target energy, change climate, impact climate, issue air, promote energy, emission free, implement energy, recovery pollution, control regulation, florida department, commission license, gas regulation, appeal district, source electricity, effective energy, nitrous oxide, impact clean, think carbon, global climate, produce carbon, clean job, efficient natural, emission monitor, emission issue, quality permit, product carbon, china air, reduce sulfur, available control, emission rate, regulation low, capture sequestration, nation energy, emission year, efficient combine, carbon economy, comply environmental, glacier hill, hill wind, nox sox, tax australia, way comply, emission intensity, oxide emission, emission improve, emission increase, install low, commission public, castle peak, capture carbon, wait commission, emission compare, clean electricity, high hydrocarbon, emission come, weight fuel, stability reserve, quality regulation, request public, additive process, gas carbon, epa requirement, liter diesel, meet reduction, talk climate, expect carbon, emission ton, ambient air, know carbon</p>
--	--